

**The American Samoa Longline Limited-entry Fishery
Annual Report
1 January - 31 December, 2018¹**

Fisheries Research and Monitoring Division (FRMD)
Pacific Islands Fisheries Science Center (PIFSC), NOAA Fisheries
NOAA Inouye Regional Center
1845 Wasp Boulevard, Building 176, Honolulu, HI 96818

This annual report for the period 1 January - 31 December, 2018, contains summary data of fishing effort and catch statistics as reported on longline log sheets for the American Samoa longline limited-entry fishery. Data in this report originate from the PIFSC Information Management System (Oracle) table LLDS_RPT_STATS_AS20180315_RFMO, representing preliminary data received as of 11 February 2019. Catch and effort statistics are based on date of longline haul. When a statistic (number of vessels, trips) involves dates of haul in two summary periods (i.e., years, semi-annual, quarters), the item is counted in both summary periods. Thus, a trip total is for “partial and completed” trips. As such, these statistics are not additive (i.e., sum of four quarters is not the total for the year, etc.).

The following table shows fishery statistics for the stated time period, area, and set type, and includes effort (number of vessels, trips, sets, and hooks set), and for each listed species, organized by pelagic management unit species (PMUS) groups of billfish, shark, tuna, and other, the table includes the number of fish caught, kept, and released, and the catch per unit effort (CPUE), measured as the number of fish caught per 1,000 hooks.

Additional figures graph catch numbers and effort for important species for the stated time period, area, and set type, for years 2000-2018.

DRAFT

¹PIFSC Data Report DR-xx-xxx. Issued dd mmm yyyy

Table 1. American Samoa longline limited-entry fishery annual statistics for all fishing areas and all fishing categories (set types), including effort (number of vessels, trips, sets, and hooks set), and for each listed species, organized by pelagic management unit species (PMUS) groups of billfish, shark, tuna, and other, along with the number of fish caught, kept, and released, and the catch per unit effort (CPUE, number per 1,000 hooks, calculated as the sum of fish caught divided by the sum of hooks set). Data Source: PIFSC Information Management System, Longline Logbook Data.

Report Coverage

Time Period 1 January - 31 December, 2018
Set Types All Sets
Fishing Area All Areas

Number of vessels active	13
Number of trips (partial or completed)	68
Number of sets	1,162
Number of hooks set	3,191,449

Pelagic Management Unit Species (PMUS)	Number Caught	Number Kept	Number Released	CPUE Number Caught per 1000 hooks
PMUS				
Billfish PMUS				
Blue marlin	303	297	6	0.09
Striped marlin	15	14	1	0.00
Shortbill spearfish	47	14	33	0.01
Swordfish	69	53	16	0.02
Other billfishes	27	10	17	0.01
Total	461	388	73	0.14
Shark PMUS				
Blue shark	2,086	83	2,003	0.65
Mako sharks	79	8	71	0.02
Thresher sharks	243	6	237	0.08
Oceanic whitetip shark	311	0	311	0.10
Silky shark	265	11	254	0.08
Other Sharks	2	0	2	0.00
Total	2,986	108	2,878	0.94
Tuna PMUS				
Albacore	42,196	41,792	404	13.22
Bigeye tuna	1,578	1,544	34	0.49
Yellowfin tuna	8,120	7,987	133	2.54
Bluefin tuna	3	3	0	0.00
Skipjack tuna	5,879	5,738	141	1.84
Other tunas	0	0	0	0.00
Total	57,776	57,064	712	18.10
Other PMUS				
Mahimahi	212	205	7	0.07
Moonfish	49	42	7	0.02
Wahoo	1,353	1,330	23	0.42
Oilfish	697	5	692	0.22
Pomfret	122	31	91	0.04
Total	2,433	1,613	820	0.76
Total PMUS	63,656	59,173	4,483	19.95
Total Non-PMUS	26	10	16	0.01
Total All Species	63,682	59,183	4,499	19.95

Number of Vessels

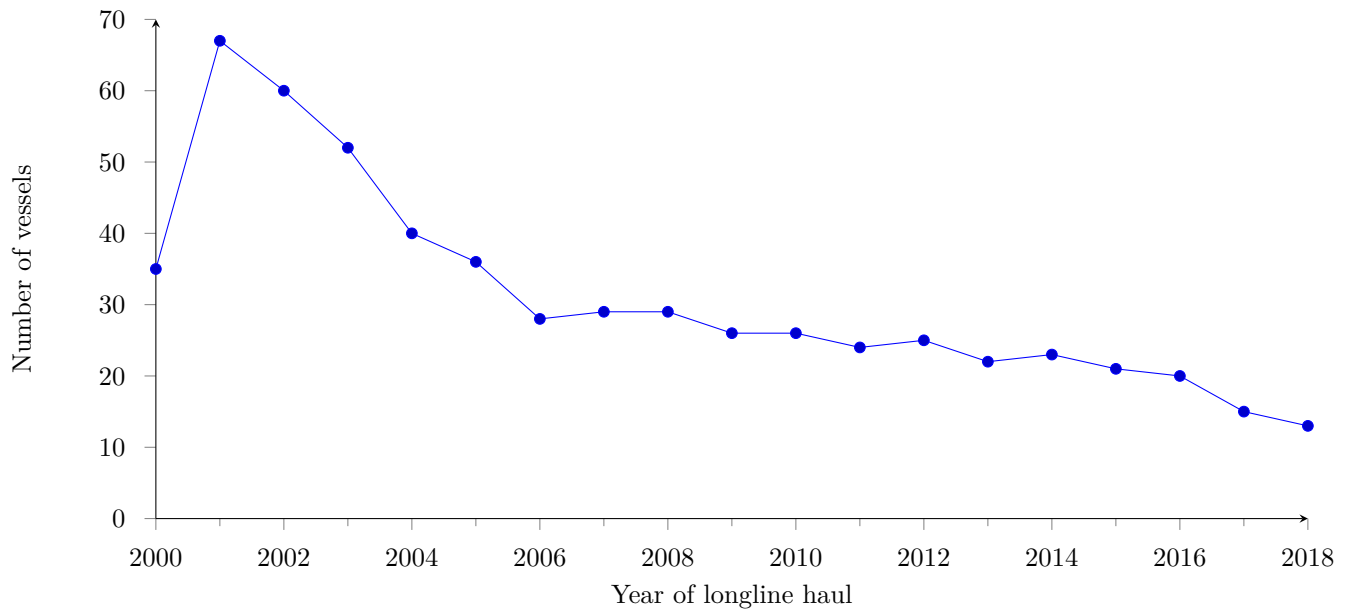


Figure 1: Number of active longline vessels based in American Samoa, by year, 2000-2018.

Number of Trips

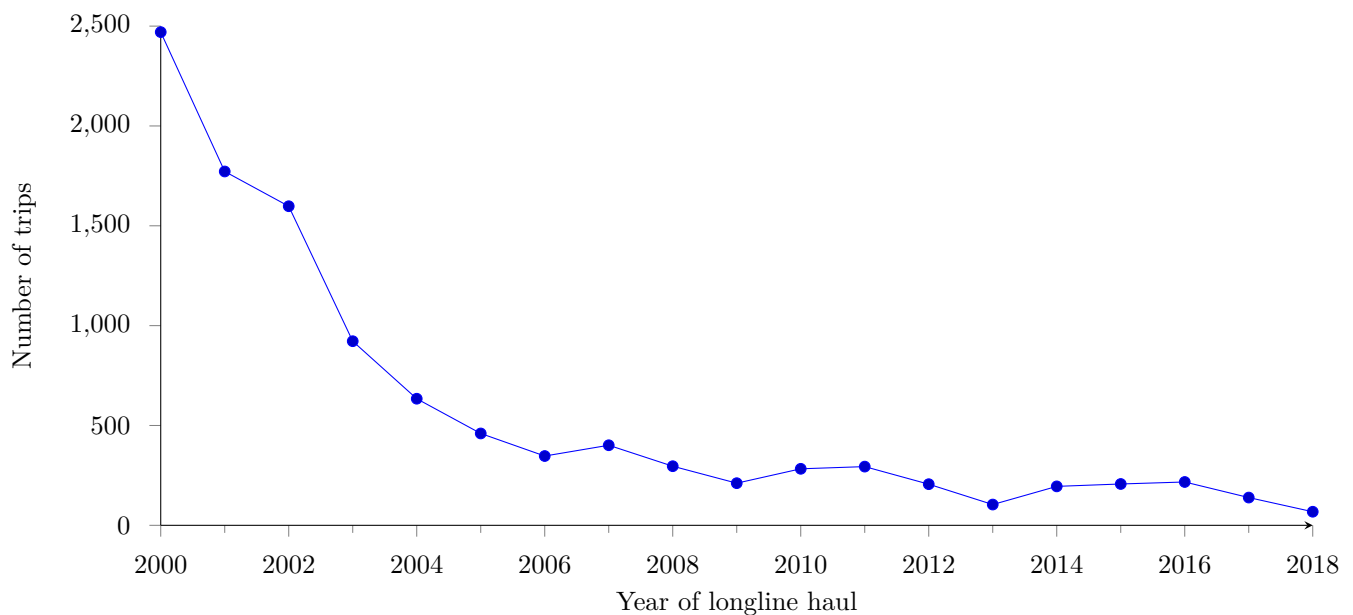


Figure 2: Number of fishing trips by longline vessels based in American Samoa, by year, 2000-2018.

DRAFT

Number of Sets

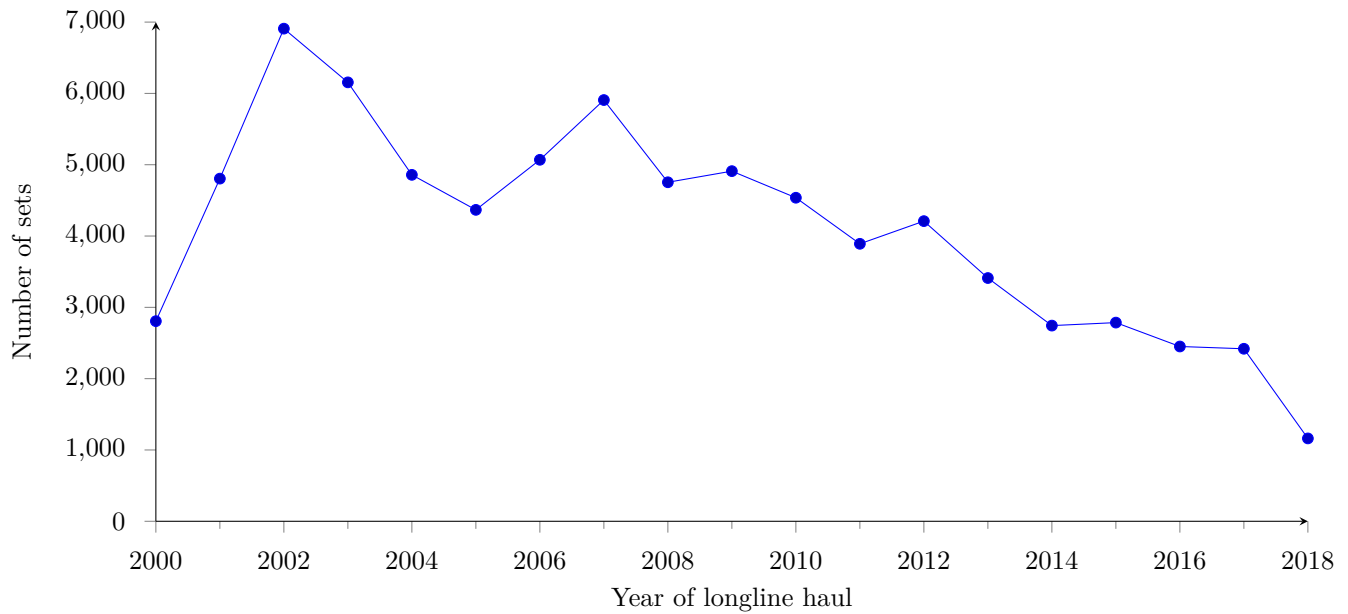


Figure 3: Number of fishing sets by longline vessels based in American Samoa, by year, 2000-2018.

Number of Hooks

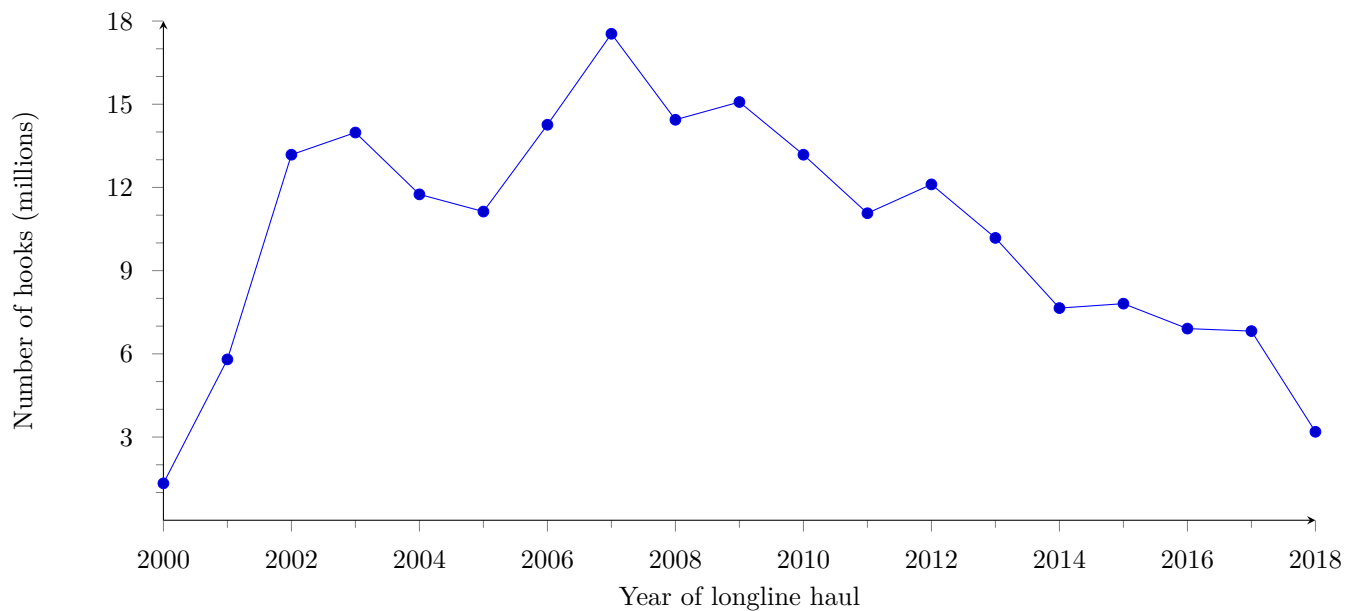


Figure 4: Number of hooks in millions, set by longline vessels based in American Samoa, by year, 2000-2018.

DRAFT

Albacore Catch

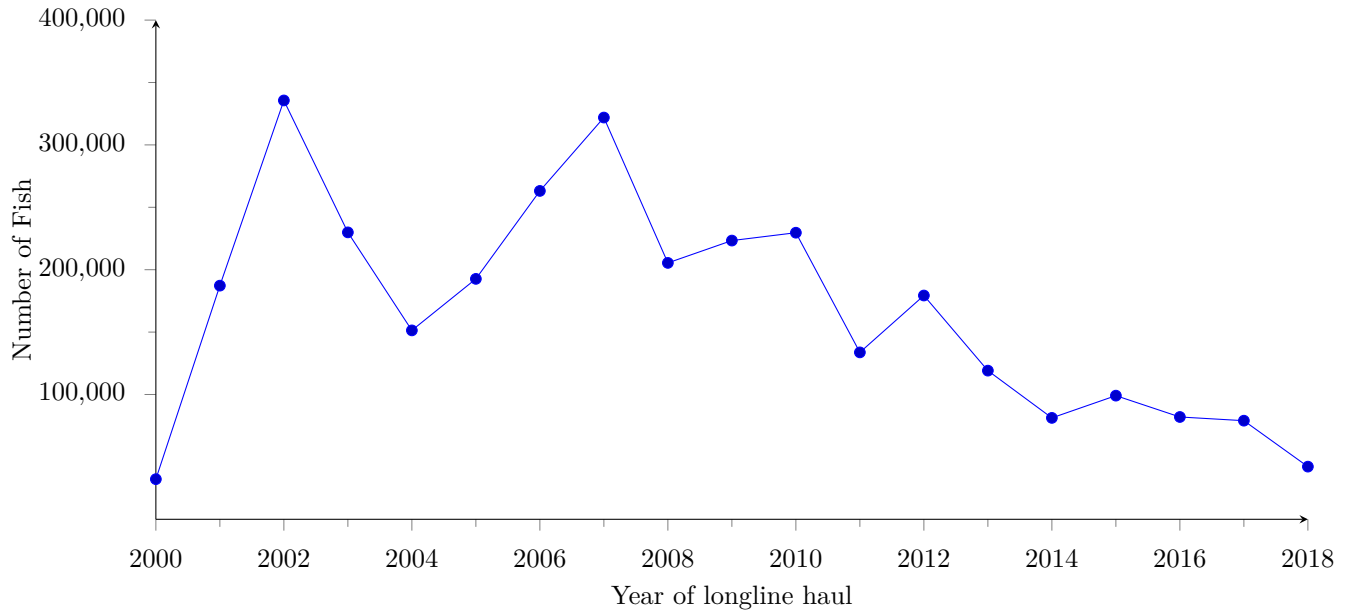


Figure 5: Annual catch (kept + released) of albacore tuna by longline vessels based in American Samoa, 2000-2018.

Albacore Catch per Unit Effort

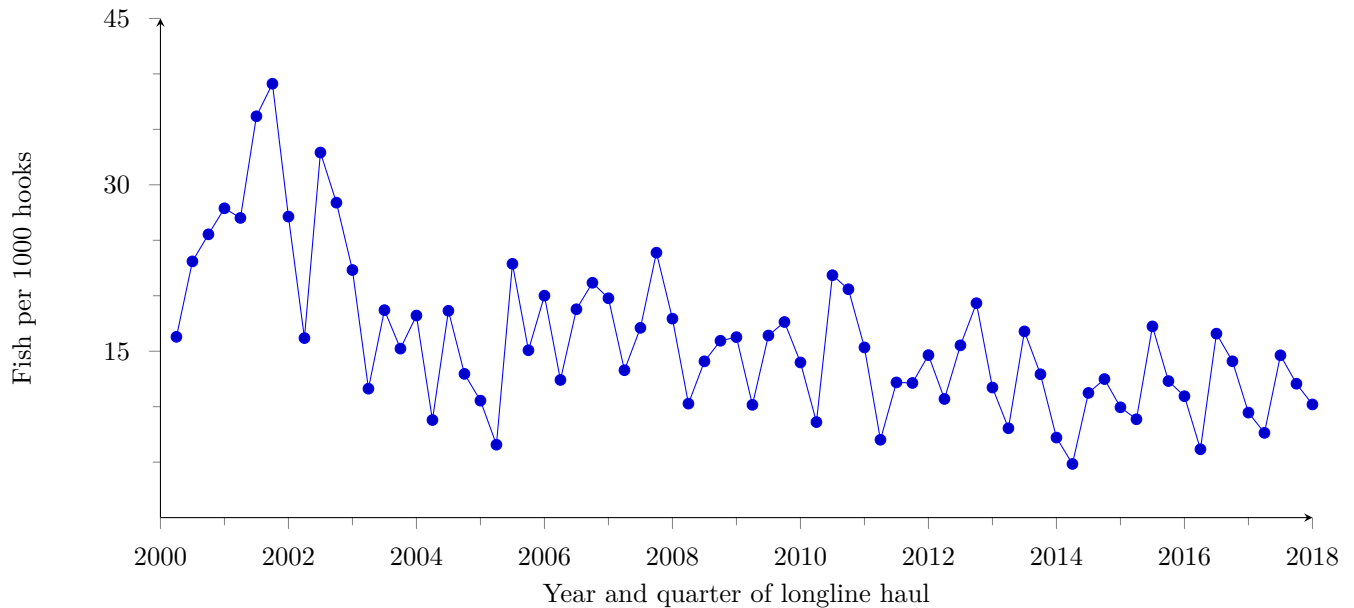


Figure 6: Quarterly CPUE of albacore tuna kept + released) per 1000 hooks by longline vessels based in American Samoa, 2000-2018.

DRAFT

Bigeye Tuna Catch

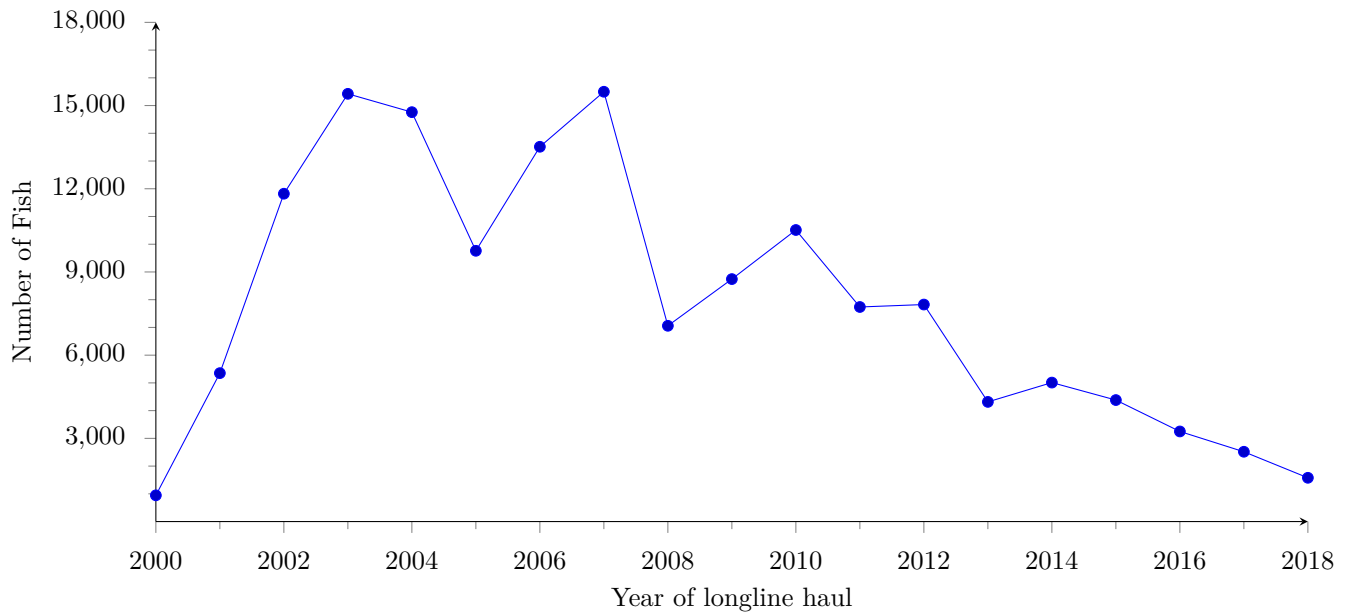


Figure 7: Annual catch (kept + released) of bigeye tuna by longline vessels based in American Samoa, 2000-2018.

Bigeye Tuna Catch per Unit Effort

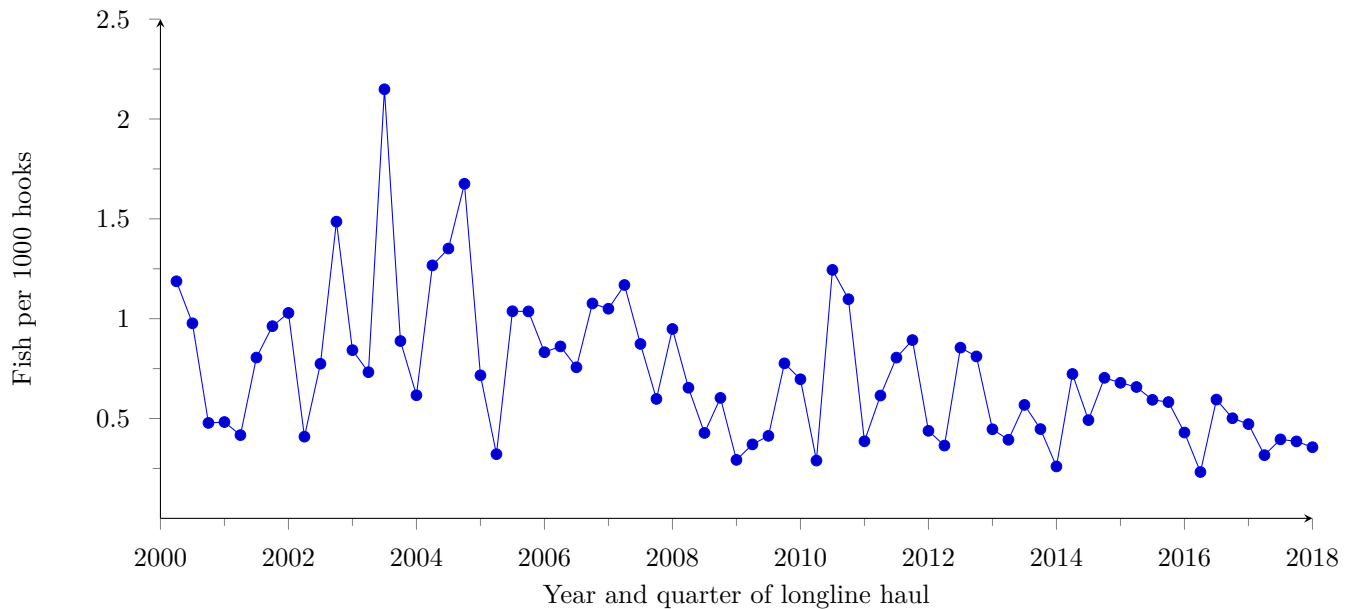


Figure 8: Quarterly CPUE of bigeye tuna (kept + released) per 1000 hooks by longline vessels based in American Samoa, 2000-2018.

DRAFT

Yellowfin Tuna Catch

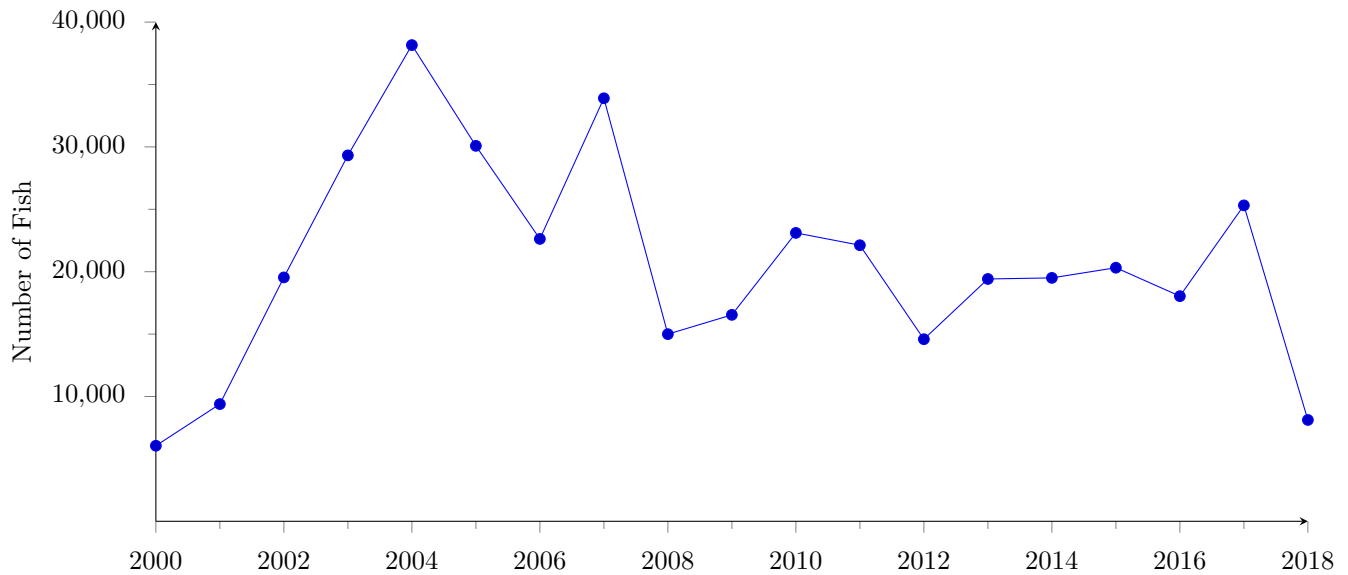


Figure 9: Annual catch (kept + released) of yellowfin tuna by longline vessels based in American Samoa, 2000-2018.

Yellowfin Tuna Catch per Unit Effort

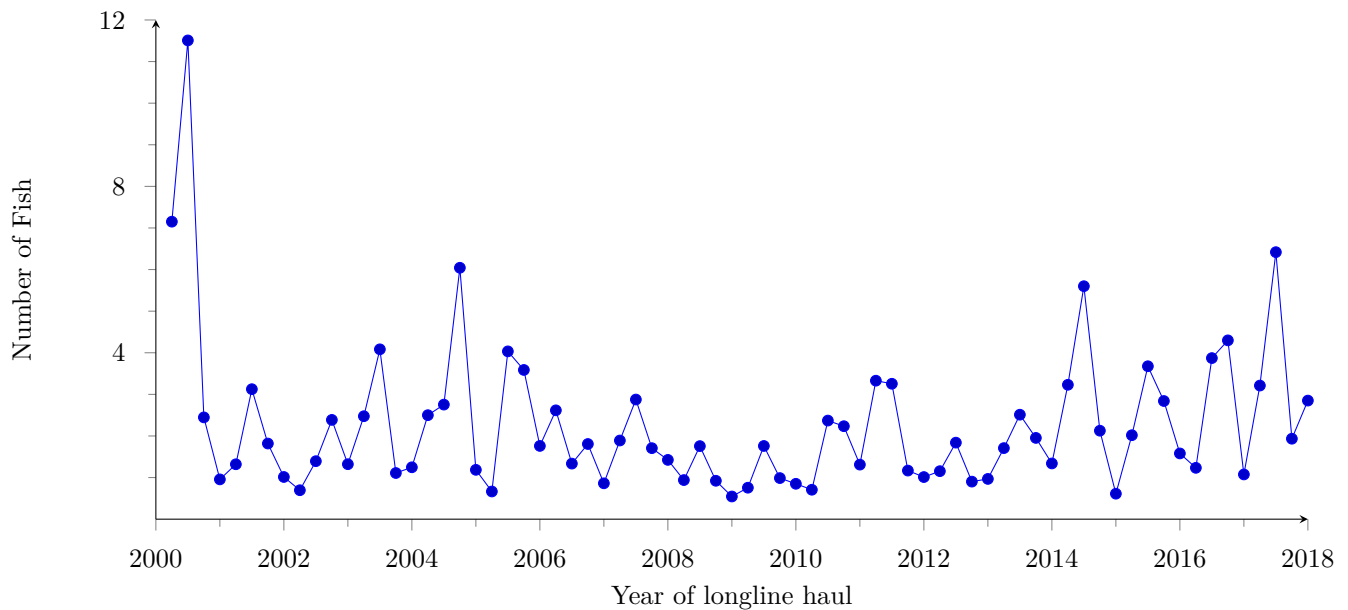


Figure 10: Quarterly CPUE of yellowfin tuna kept + released) per 1000 hooks by longline vessels based in American Samoa, 2000-2018.

Skipjack Tuna Catch

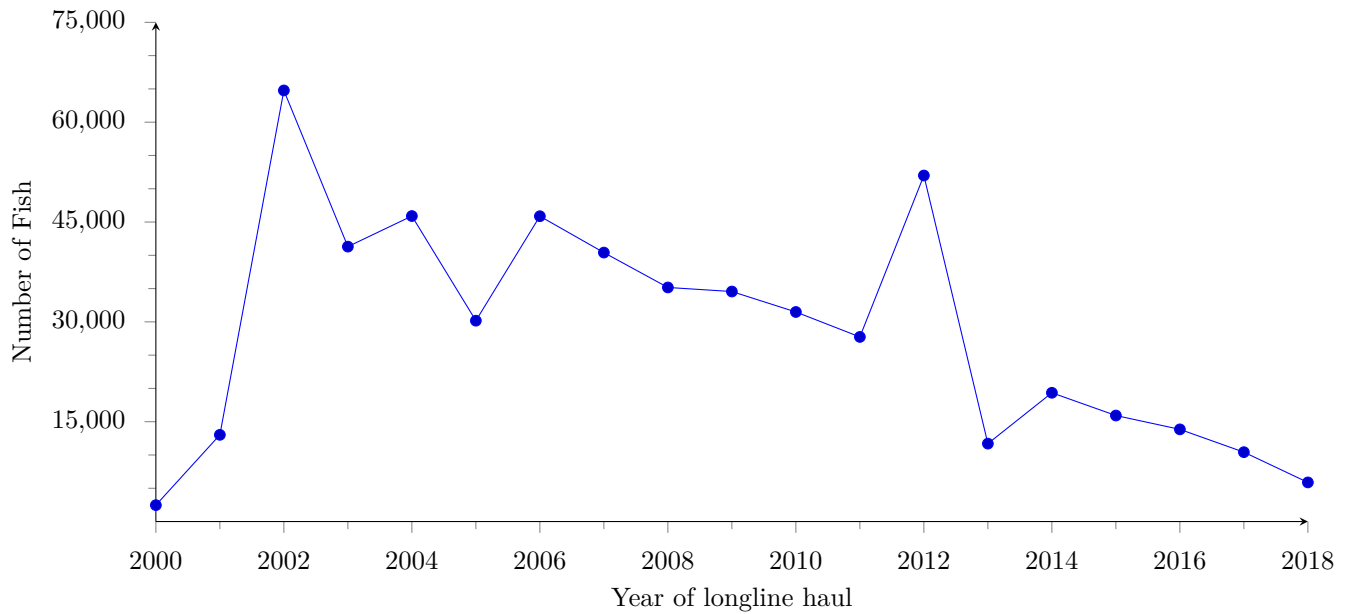


Figure 11: Annual catch (kept + released) of skipjack tuna by longline vessels based in American Samoa, 2000-2018.

Skipjack Tuna Catch per Unit Effort

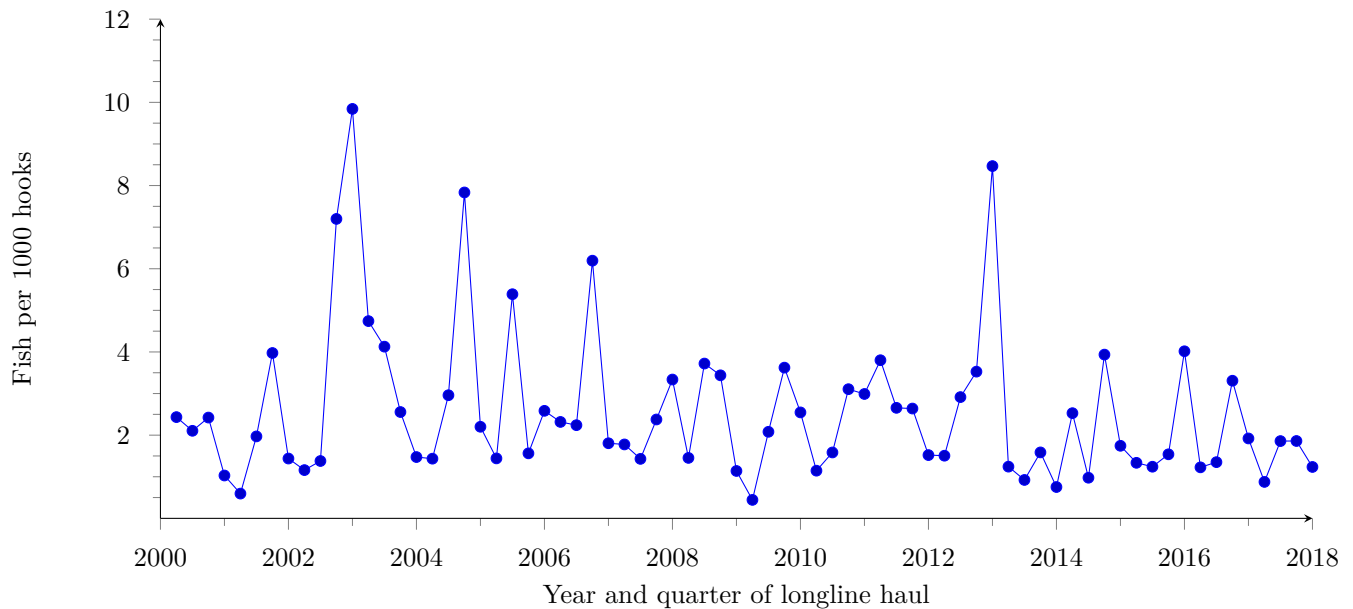


Figure 12: Quarterly CPUE of skipjack tuna kept + released) per 1000 hooks by longline vessels based in American Samoa, 2000-2018.

Mahimahi Catch

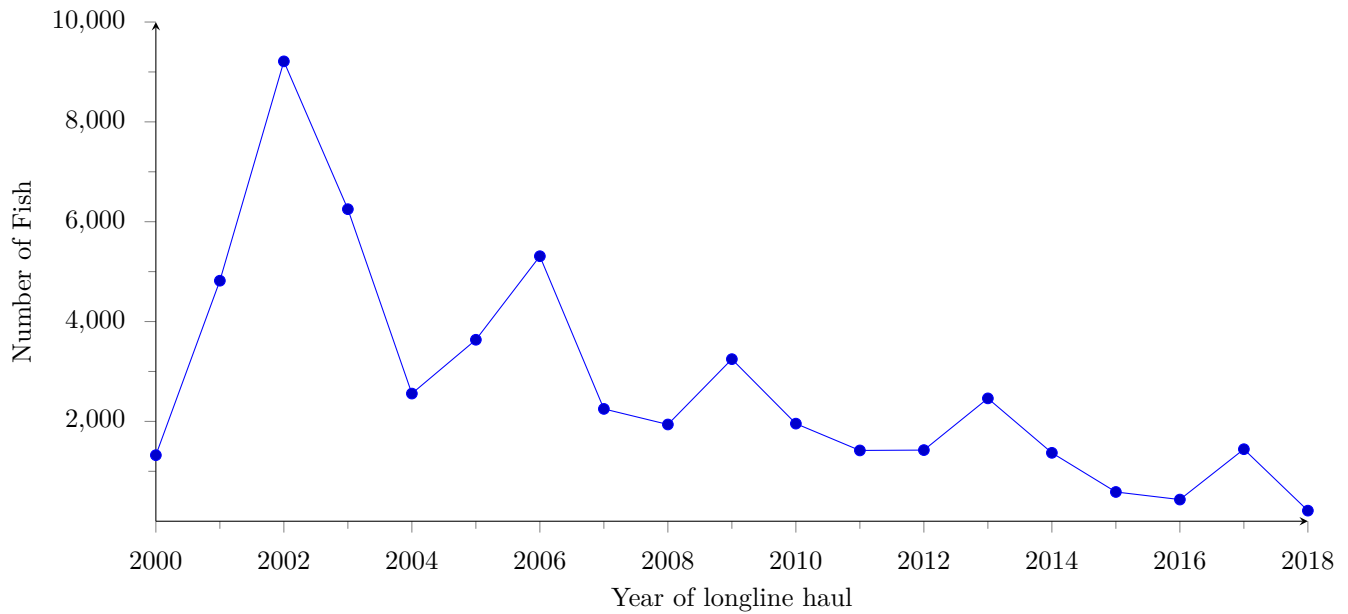


Figure 13: Annual catch (kept + released) of mahimahi by longline vessels based in American Samoa, 2000-2018.

Mahimahi Catch per Unit Effort

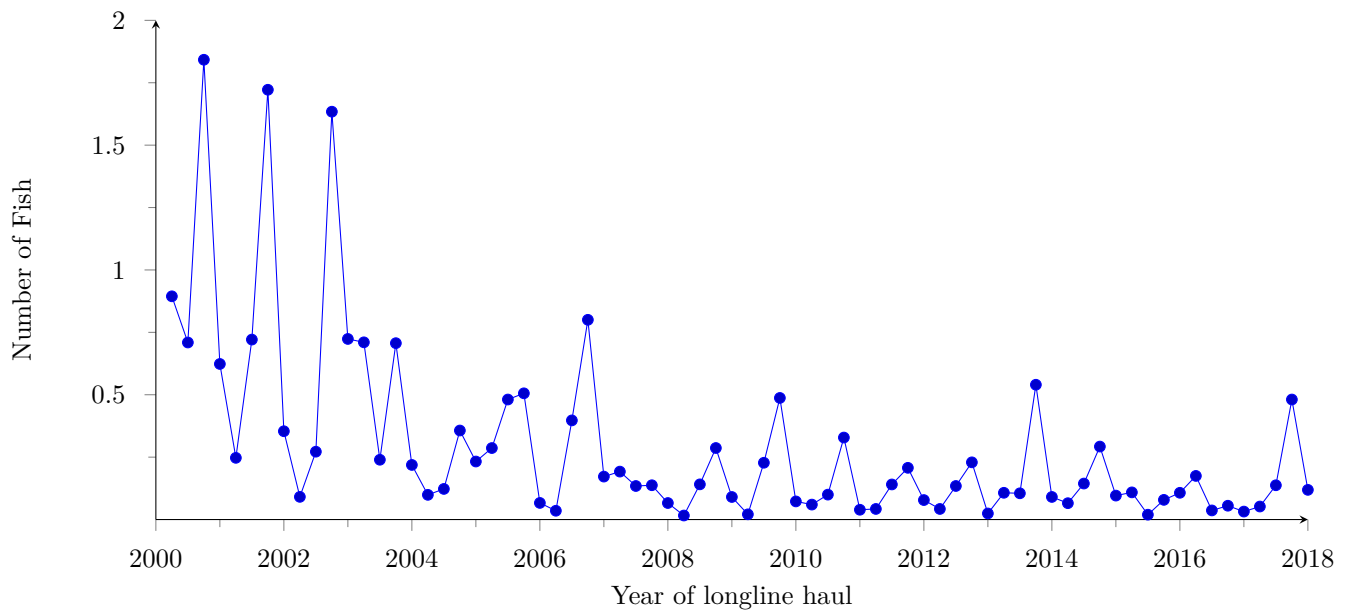


Figure 14: Quarterly CPUE of mahimahi kept + released) per 1000 hooks by longline vessels based in American Samoa, 2000-2018.

DRAFT

Billfish Catch

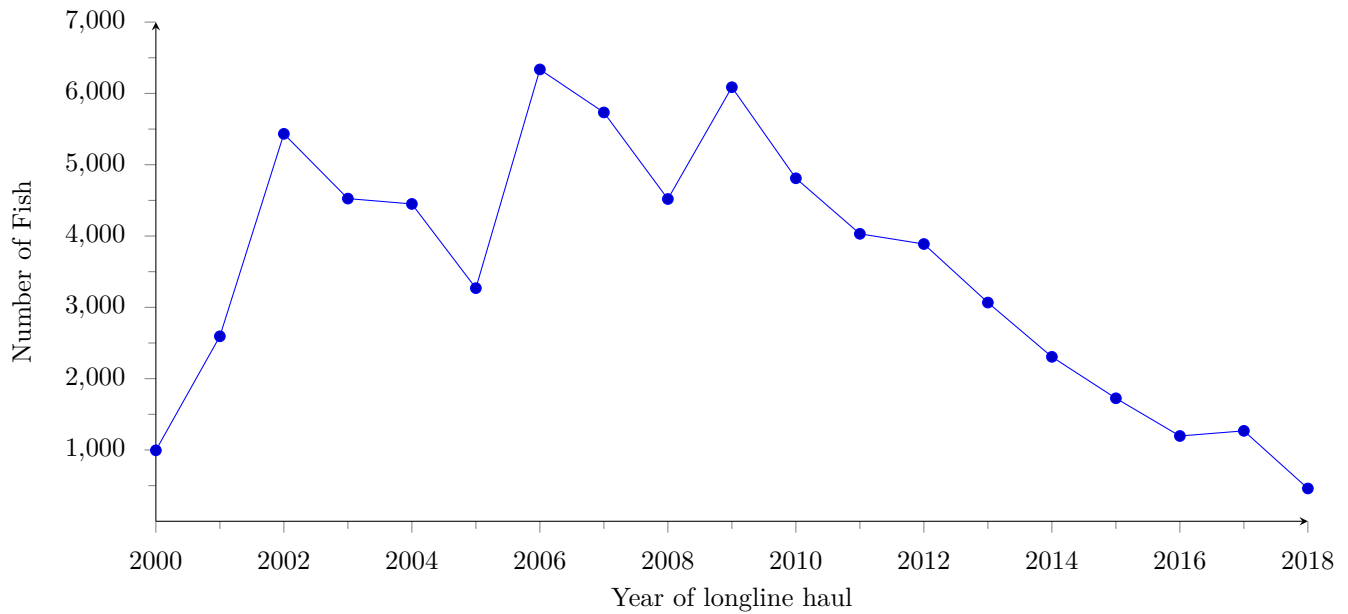


Figure 15: Annual catch (kept + released) of billfish by longline vessels based in American Samoa, 2000-2018.

Billfish Catch per Unit Effort

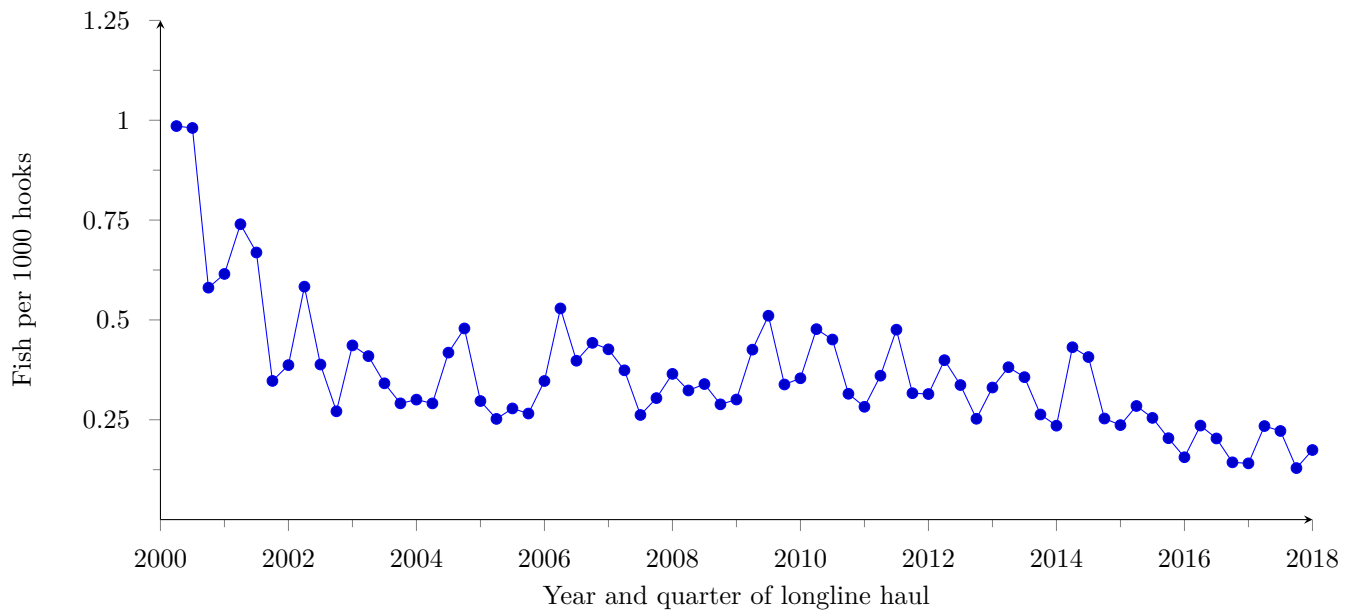


Figure 16: Quarterly CPUE of billfish (kept + released) per 1000 hooks by longline vessels based in American Samoa, 2000-2018.

DRAFT

Shark Catch

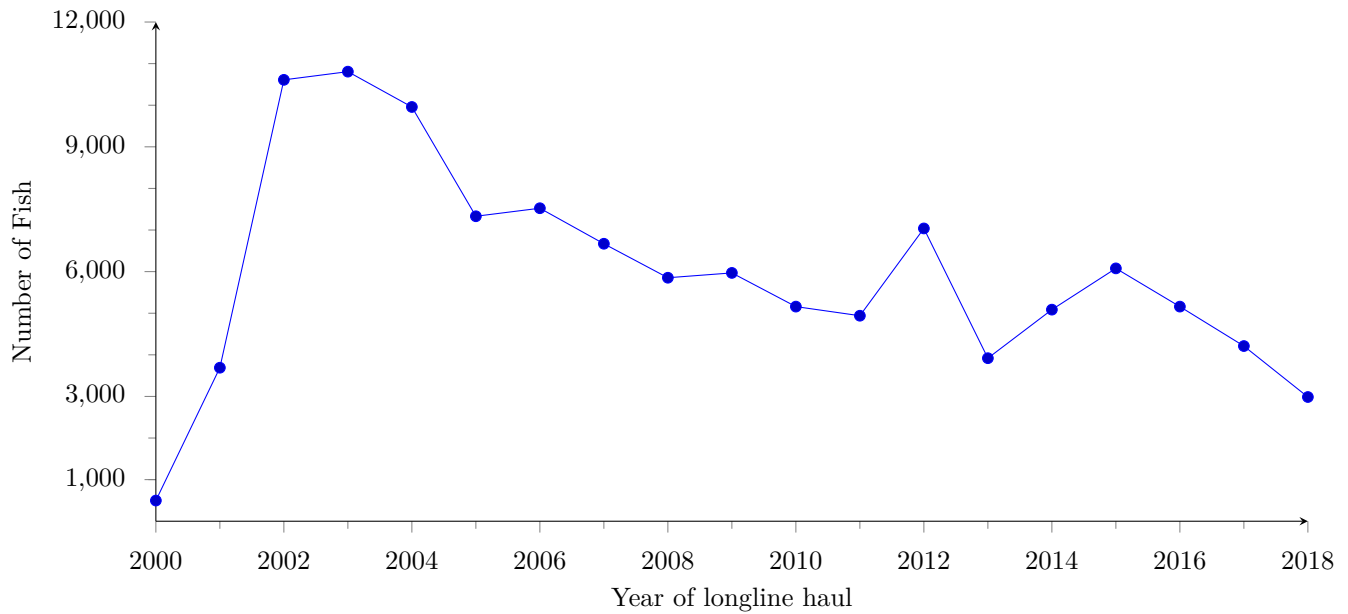


Figure 17: Annual catch (kept + released) of sharks by longline vessels based in American Samoa, 2000-2018.

Shark Catch per Unit Effort

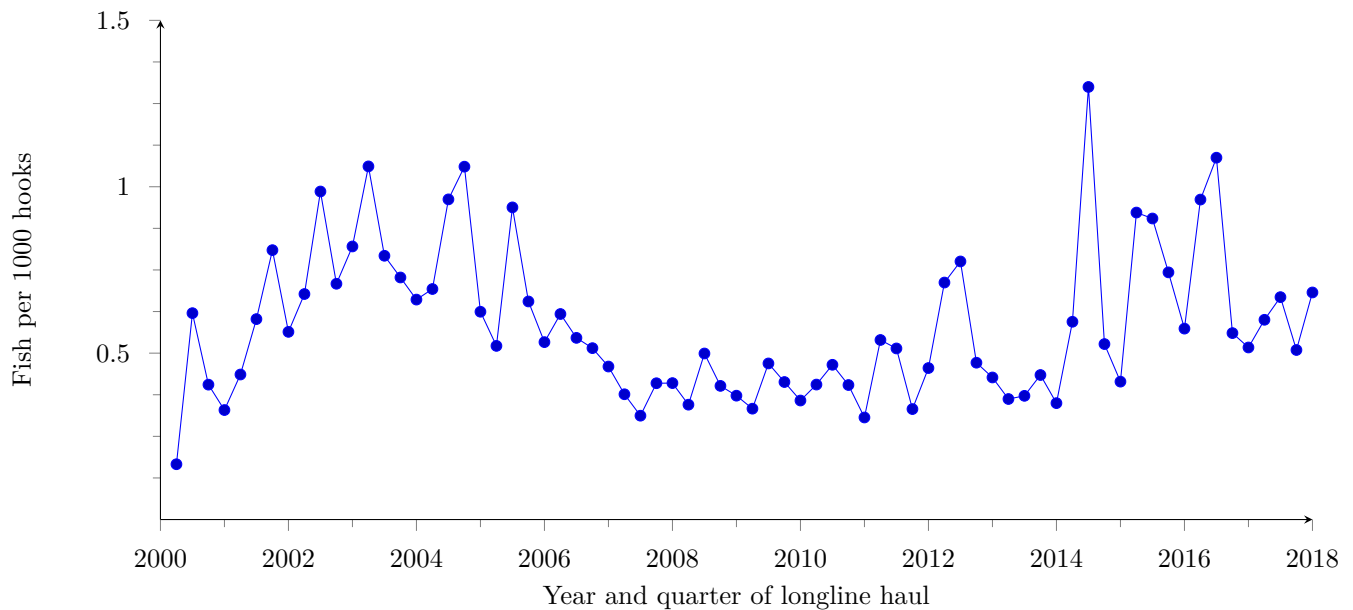


Figure 18: Quarterly CPUE of sharks kept + released) per 1000 hooks by longline vessels based in American Samoa, 2000-2018.

DRAFT

Wahoo Catch

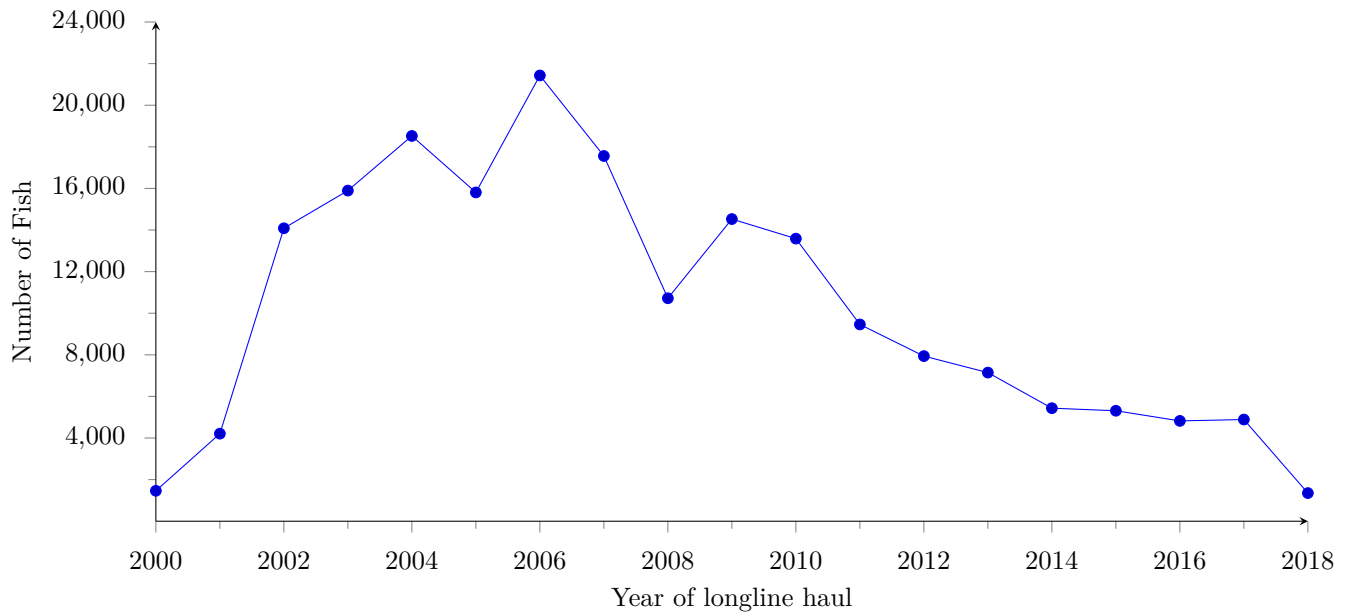


Figure 19: Annual catch (kept + released) of wahoo by longline vessels based in American Samoa, 2000-2018.

Wahoo Catch per Unit Effort

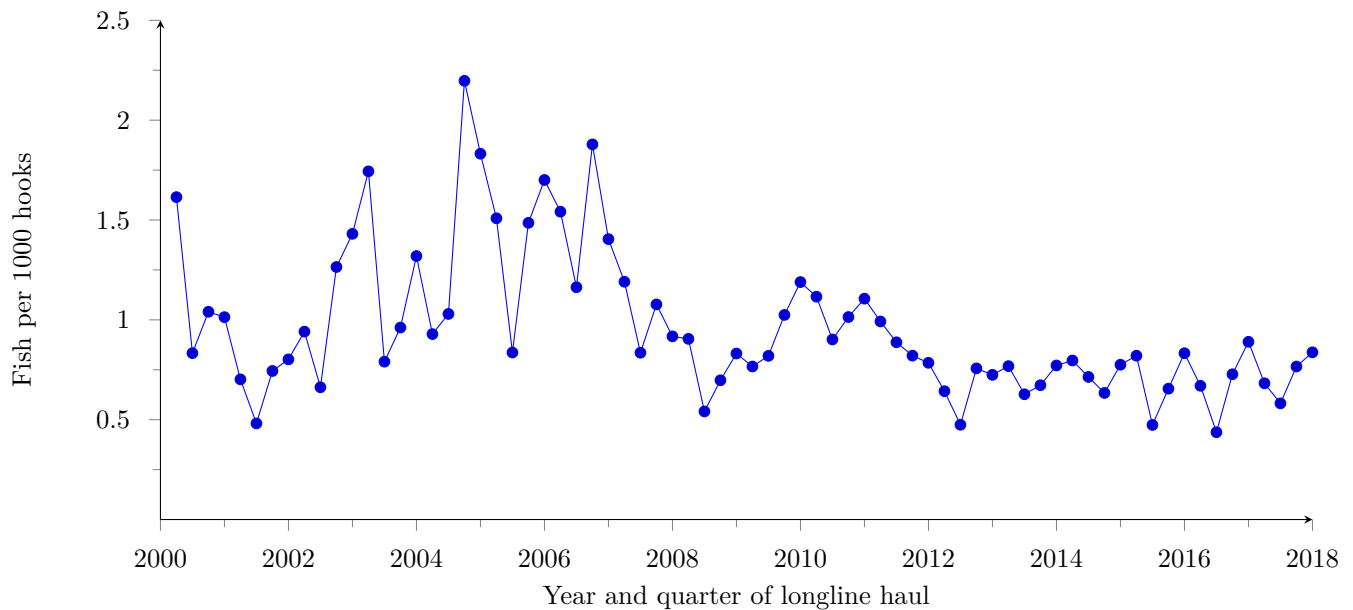


Figure 20: Quarterly CPUE of wahoo (kept + released) per 1000 hooks by longline vessels based in American Samoa, 2000-2018.