

**The American Samoa Longline Limited-entry Fishery
Annual Report
1 January - 31 December, 2019¹**

Fisheries Research and Monitoring Division (FRMD)
Pacific Islands Fisheries Science Center (PIFSC), NOAA Fisheries
NOAA Inouye Regional Center
1845 Wasp Boulevard, Building 176, Honolulu, HI 96818

This annual report for the period 1 January - 31 December, 2019, contains summary data summaries of fishing effort and catch statistics as reported on longline log sheets for the American Samoa longline limited-entry fishery. Data in this report originate from the PIFSC Information Management System (Oracle) table LLDS_REPORT_STATS_PRELIM_AS, representing preliminary data received as of 07 February 2020. Catch and effort statistics are based on date of longline haul. When a statistic (number of vessels, trips) involves dates of haul in two summary periods (i.e., years, semi-annual, quarters), the item is counted in both summary periods. Thus, a trip total is for “partial and completed” trips. As such, these statistics are not additive (i.e., sum of four quarters is not the total for the year, etc.).

The following tables show fishery statistics for the stated time period, area, and set type, and includes effort (number of vessels, trips, sets, and hooks set), and for each listed species, organized by pelagic management unit species (PMUS) groups of billfish, shark, tuna, and other, the table includes the number of fish caught, kept, and released, and the catch per unit effort (CPUE), measured as the number of fish caught per 1,000 hooks.

Additional figures graph catch numbers and effort for important species for the stated time period, area, and set type, for years 2000-2019.

¹PIFSC Data Report DR-xx-xxx. Issued dd mmm yyyy

Table 1. American Samoa longline limited-entry fishery annual statistics for all fishing areas and all fishing categories (set types), including effort (number of vessels, trips, sets, and hooks set), and for each listed species, organized by pelagic management unit species (PMUS) groups of billfish, shark, tuna, and other, along with the number of fish caught, kept, and released, and the catch per unit effort (CPUE, number per 1,000 hooks, calculated as the sum of fish caught divided by the sum of hooks set). Data Source: PIFSC Information Management System, Longline Logbook Data.

Report Coverage

Time Period 1 January - 31 December, 2019
Set Types All Sets
Fishing Area All Areas

Number of vessels active	17
Number of trips (partial or completed)	98
Number of sets	1,169
Number of hooks set	3,248,922

Pelagic Management Unit Species (PMUS)	Number Caught	Number Kept	Number Released	CPUE Number Caught per 1000 Hooks
PMUS				
Billfish PMUS				
Blue marlin	464	393	71	0.14
Striped marlin	27	25	2	0.01
Shortbill spearfish	156	76	80	0.05
Swordfish	76	37	39	0.02
Other billfishes	55	42	13	0.02
Total	778	573	205	0.24
Shark PMUS				
Blue shark	1,141	0	1,141	0.35
Mako sharks	71	1	70	0.02
Thresher sharks	141	0	141	0.04
Oceanic whitetip shark	325	0	325	0.10
Silky shark	517	0	517	0.16
Total	2,195	1	2,194	0.68
Tuna PMUS				
Albacore	40,988	40,591	397	12.62
Bigeye tuna	938	900	38	0.29
Yellowfin tuna	7,081	6,822	259	2.18
Bluefin tuna	0	0	0	0.00
Skipjack tuna	6,885	6,790	95	2.12
Other tunas	0	0	0	0.00
Total	55,892	55,103	789	17.20
Other PMUS				
Mahimahi	129	127	2	0.04
Moonfish	19	11	8	0.01
Wahoo	1,352	1,330	22	0.42
Oilfish	690	1	689	0.21
Pomfret	309	47	262	0.10
Total	2,499	1,516	983	0.77
Total PMUS	61,364	57,193	4,171	18.89
Non-PMUS Sharks	30	0	30	0.01
Total Non-PMUS	107	42	65	0.03
Total All Species	61,471	57,235	4,236	18.92

Number of Vessels

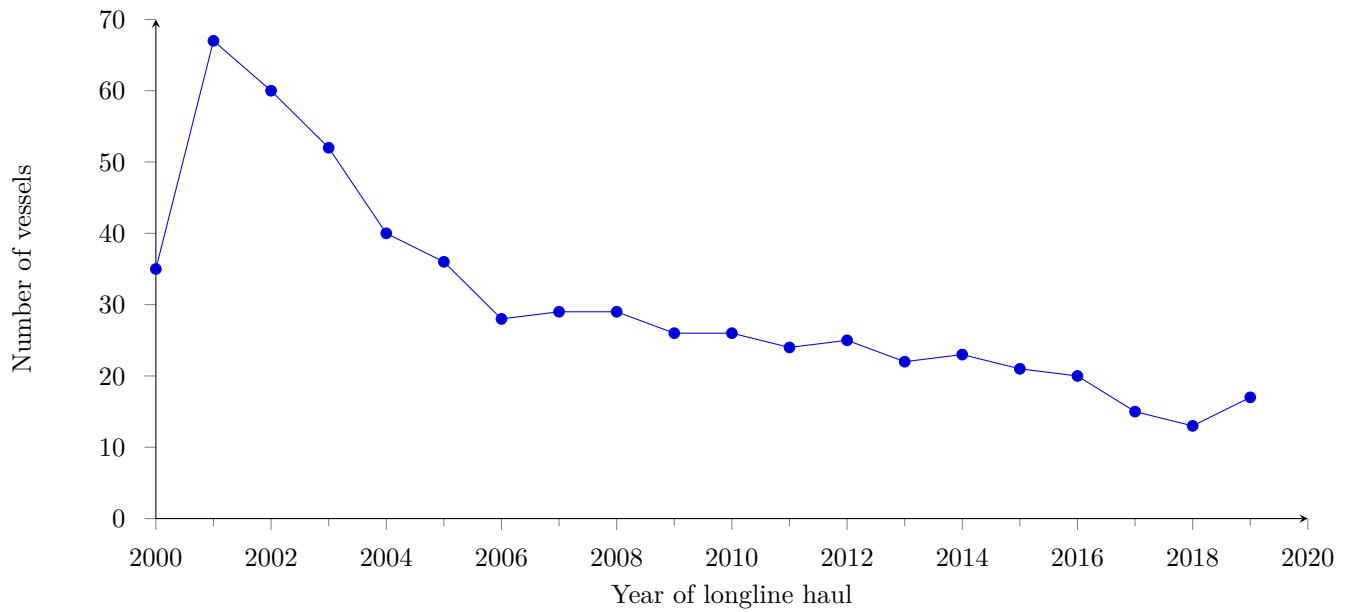


Figure 1: Annual number of active longline fishing vessels based in American Samoa, in haul years 2000-2019.

Number of Trips

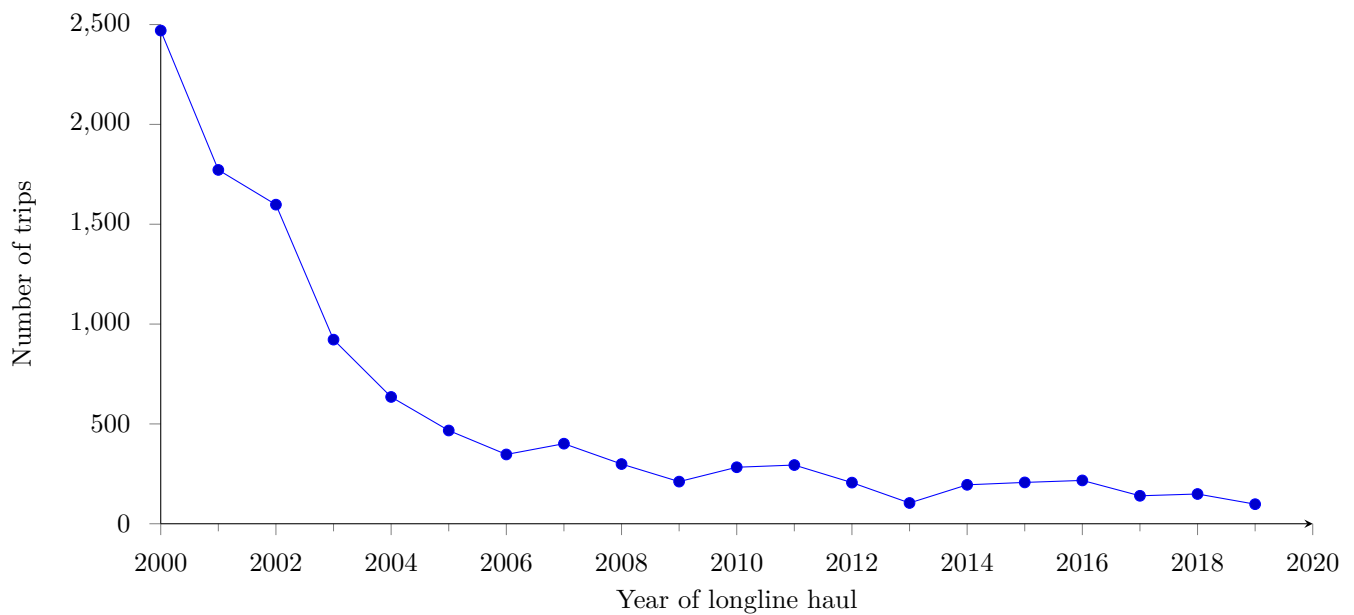


Figure 2: Annual number of trips by longline fishing vessels based in American Samoa, in haul years 2000-2019.

Number of Sets

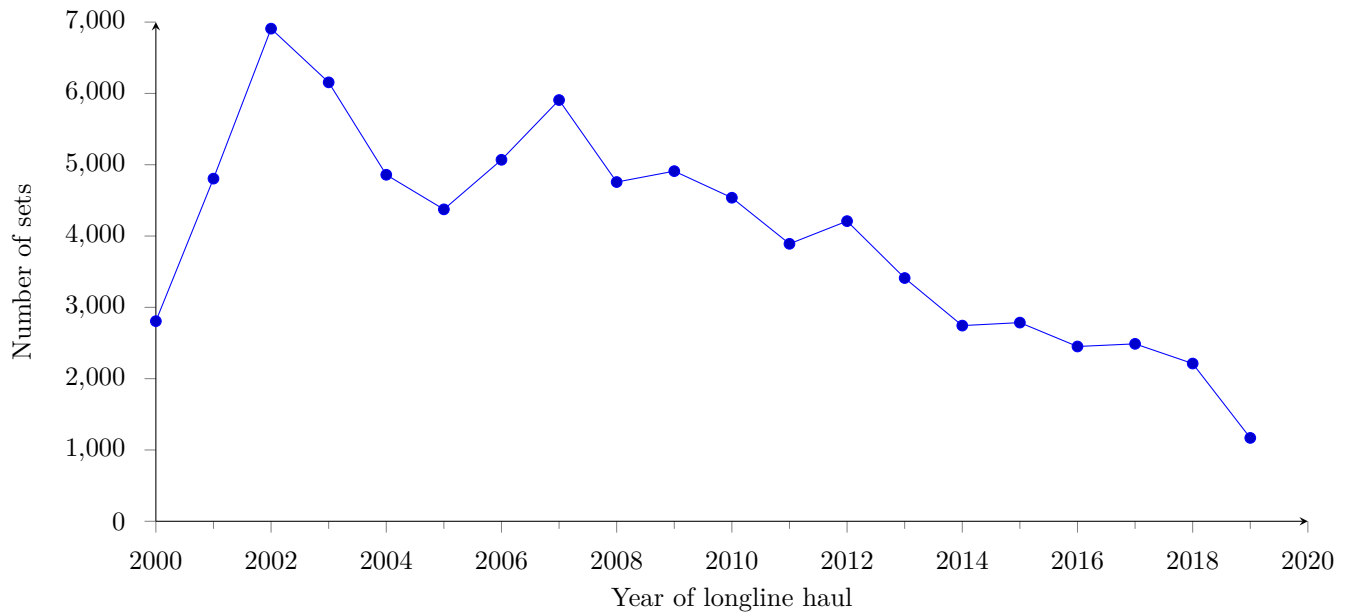


Figure 3: Annual number of sets by longline fishing vessels based in American Samoa, in haul years 2000-2019.

Number of Hooks

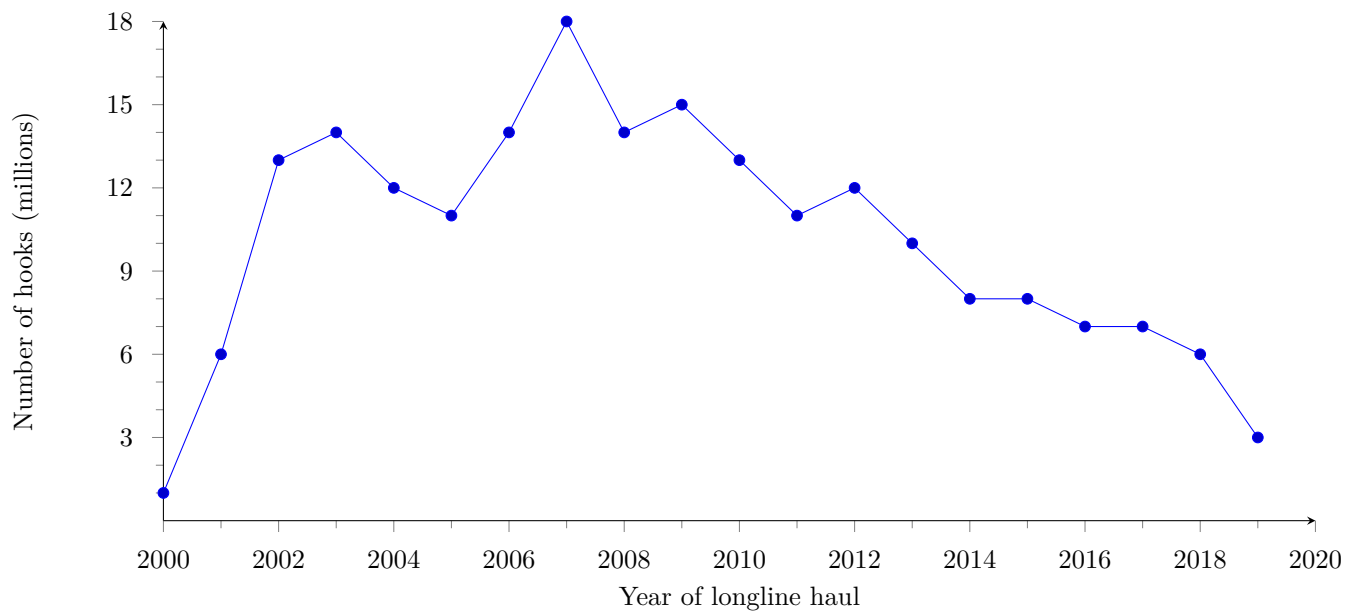


Figure 4: Number of hooks in millions, set by vessels based in American Samoa, by year, 2000-2019.

Albacore Catch

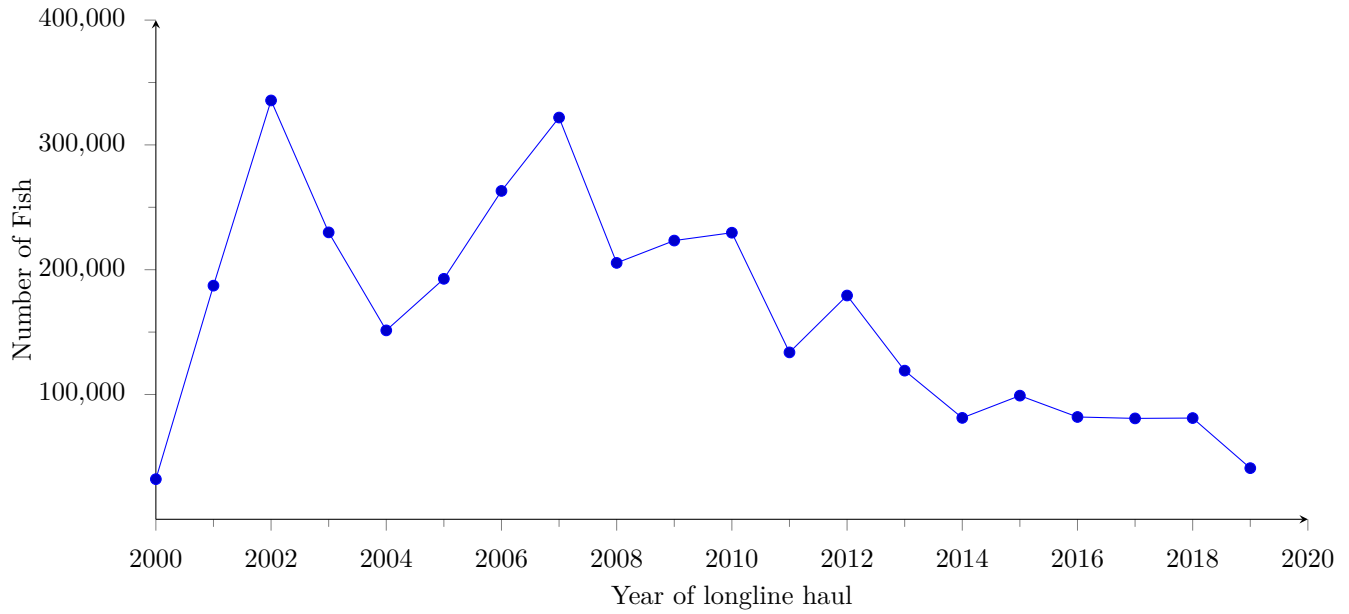


Figure 5: Annual catch (kept + released) of albacore tuna by longline vessels based in American Samoa, in haul years 2000-2019.

Albacore Catch per Unit Effort

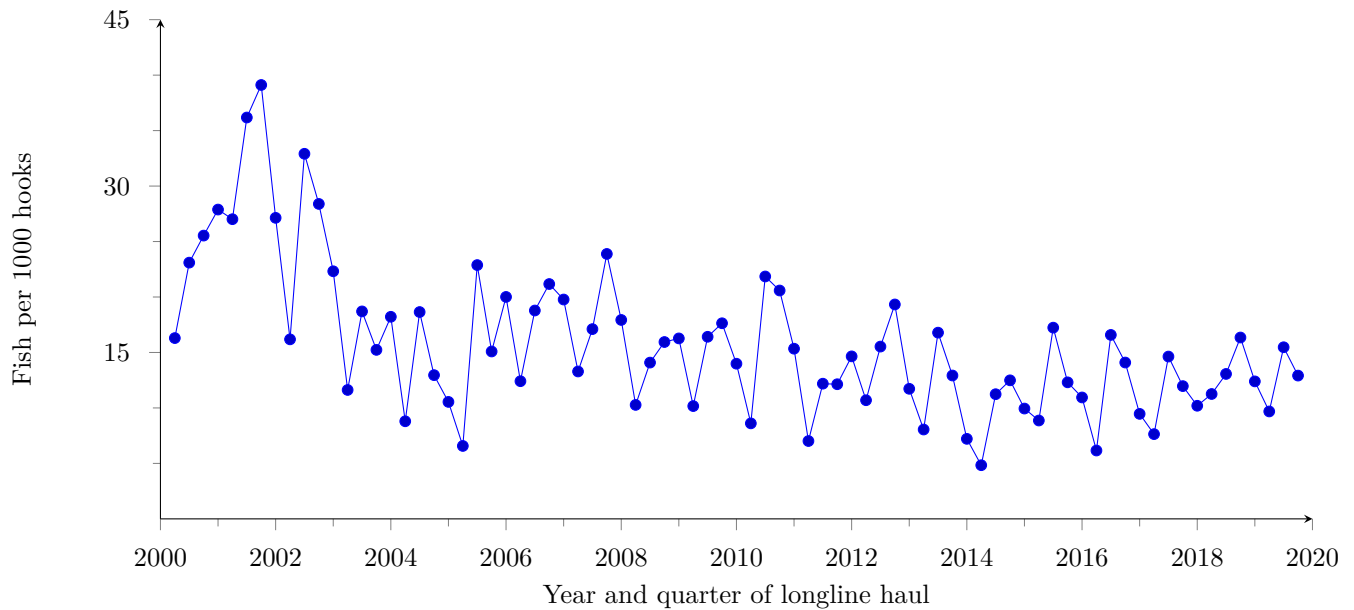


Figure 6: Quarterly catch per unit of effort (CPUE), of albacore tuna (kept + released, per 1000 hooks), by longline vessels based in American Samoa, in haul years 2000-2019.

Bigeye Tuna Catch

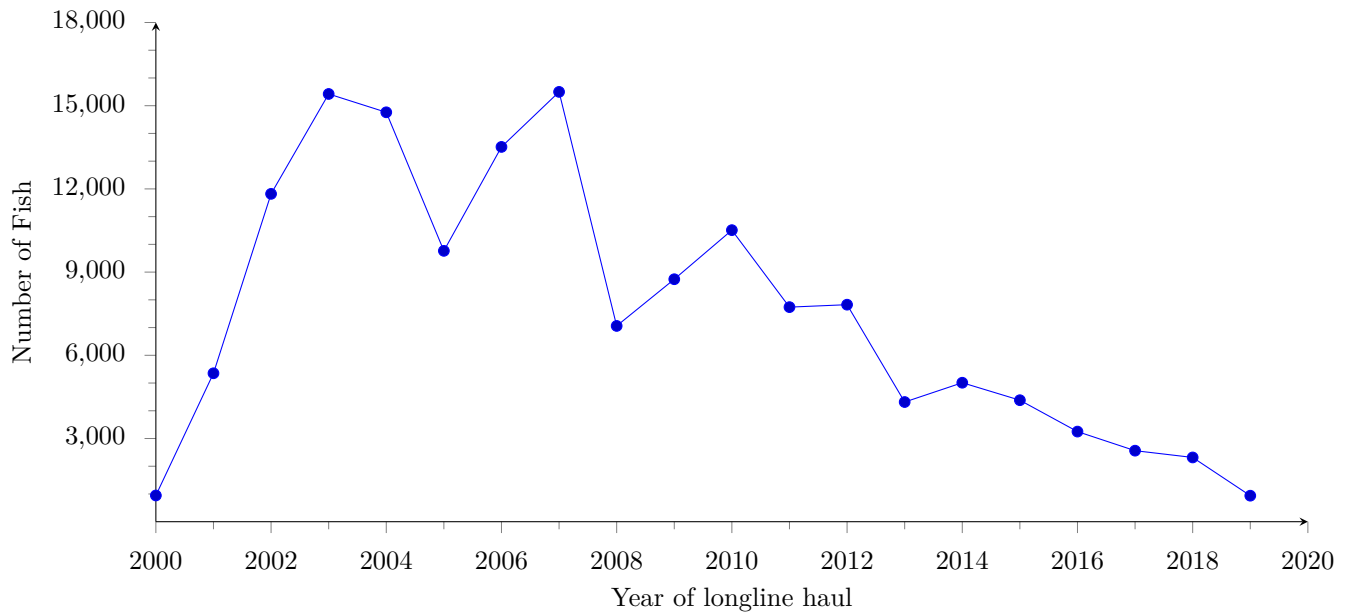


Figure 7: Annual catch (kept + released) of bigeye tuna by longline vessels based in American Samoa, in haul years 2000-2019.

Bigeye Tuna Catch per Unit Effort

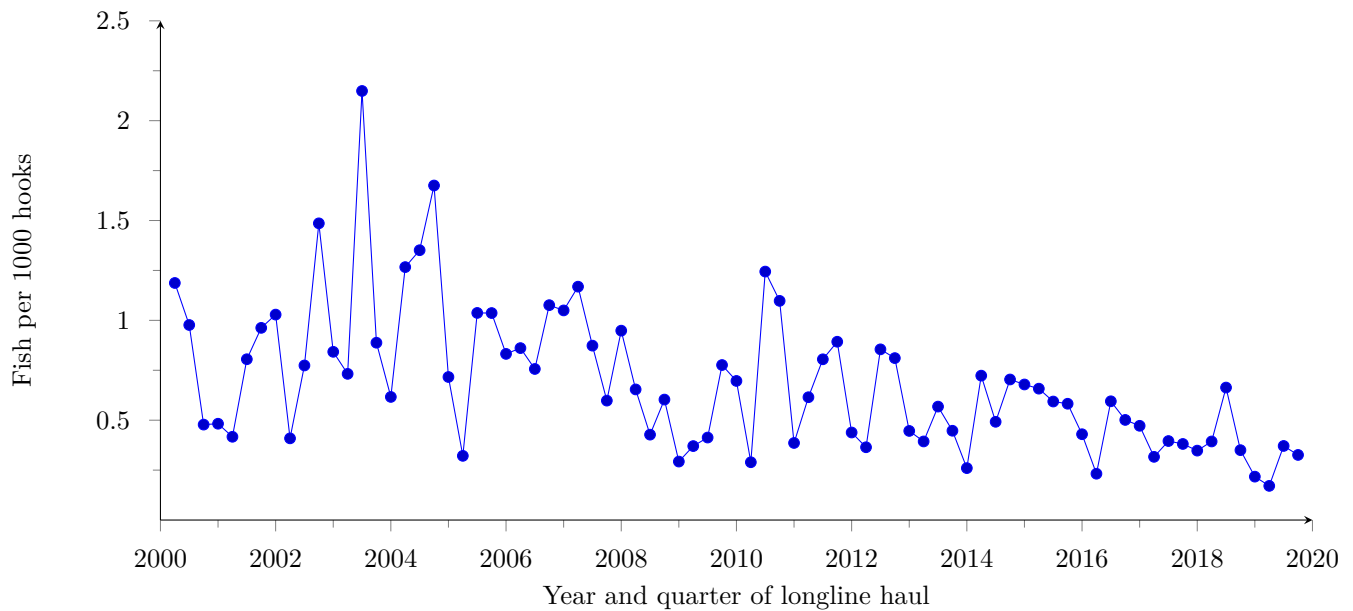


Figure 8: Quarterly catch per unit of effort (CPUE), of bigeye tuna (kept + released per 1000 hooks), by longline vessels based in American Samoa, in haul years 2000-2019.

Yellowfin Tuna Catch

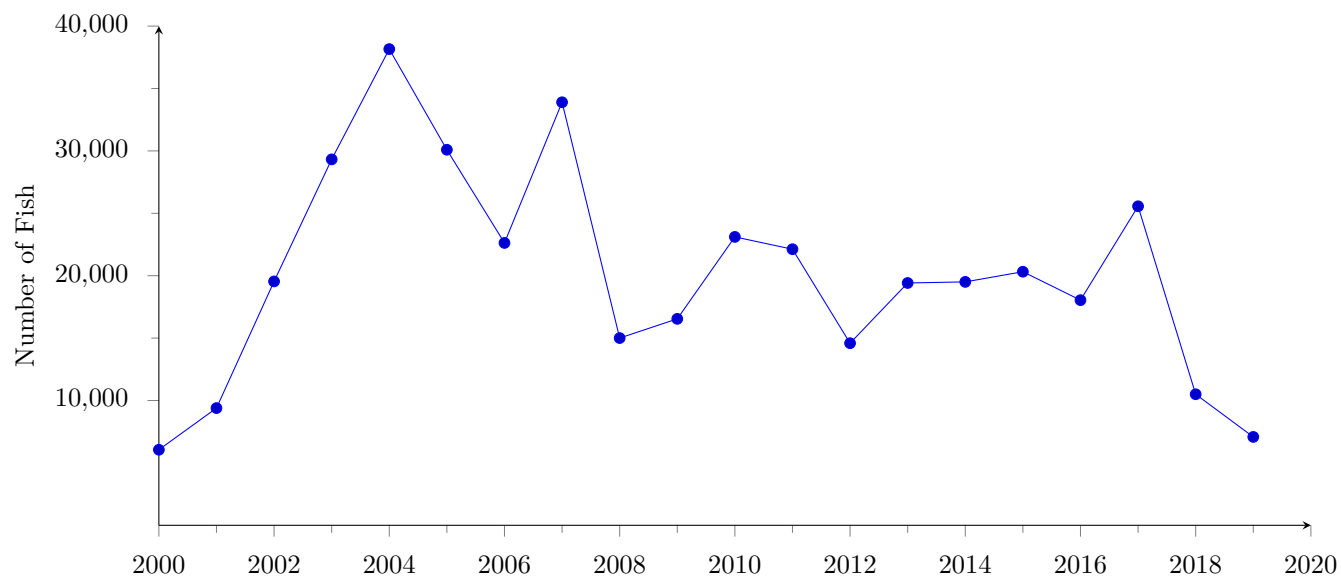


Figure 9: Annual catch (kept + released) of yellowfin tuna by longline vessels based in American Samoa, in haul years 2000-2019.

Yellowfin Tuna Catch per Unit Effort

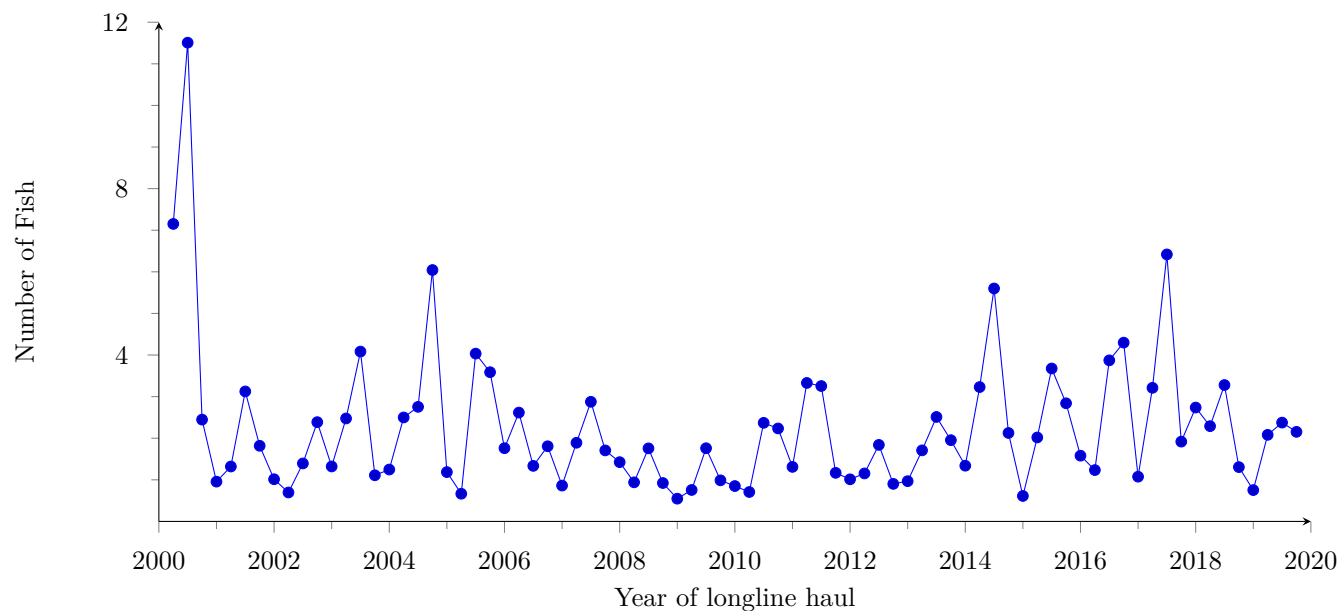


Figure 10: Quarterly catch per unit of effort (CPUE), of yellowfin tuna (kept + released, per 1000 hooks), by longline vessels based in American Samoa, in haul years 2000-2019.

Skipjack Tuna Catch

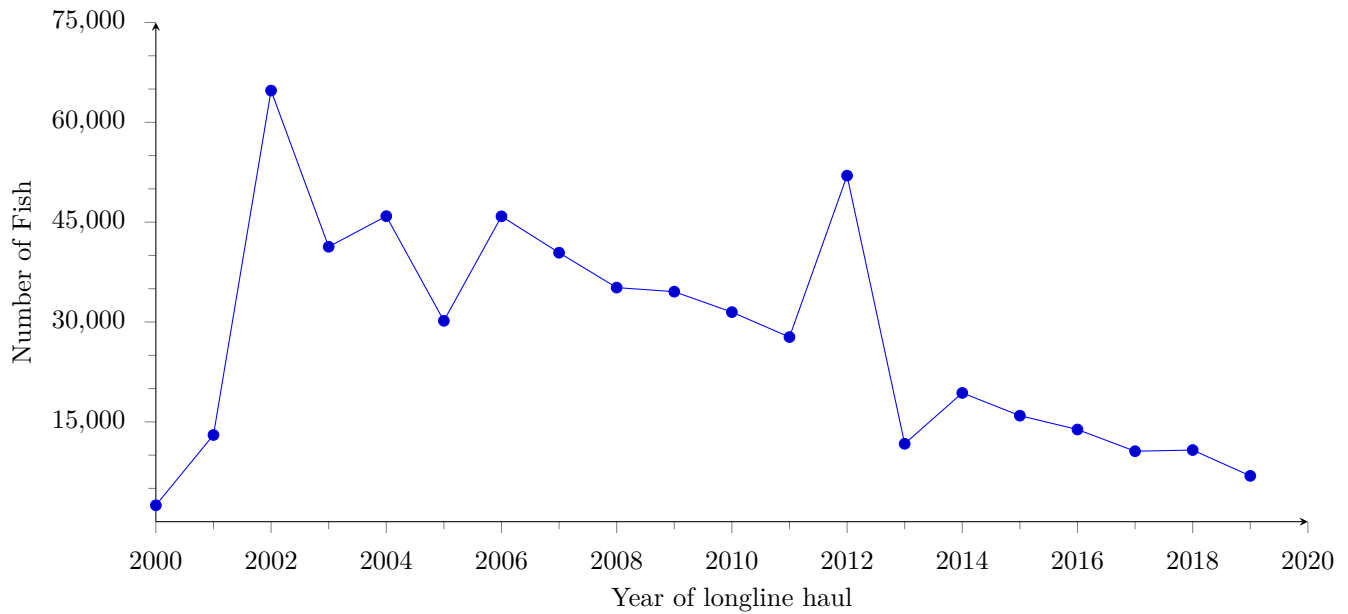


Figure 11: Annual catch (kept + released) of skipjack tuna by longline vessels based in American Samoa, in haul years 2000-2019.

Skipjack Tuna Catch per Unit Effort

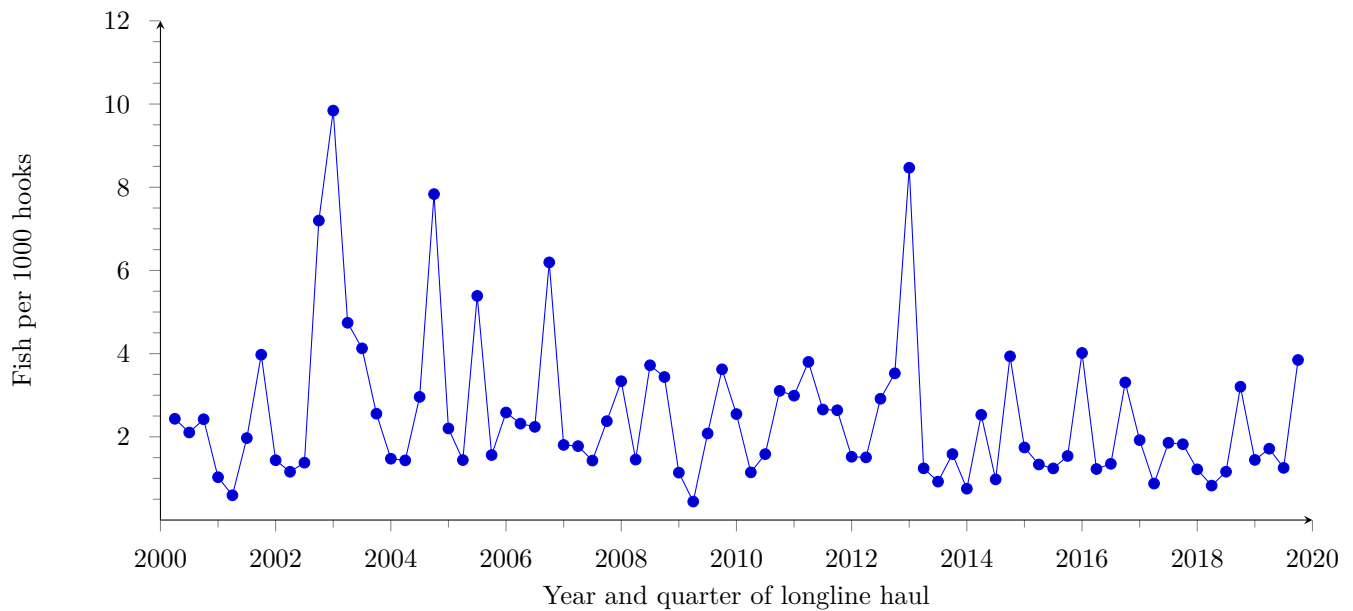


Figure 12: Quarterly catch per unit of effort (CPUE), of skipjack tuna (kept + released, per 1000 hooks), by longline vessels based in American Samoa, in haul years 2000-2019.

Mahimahi Catch

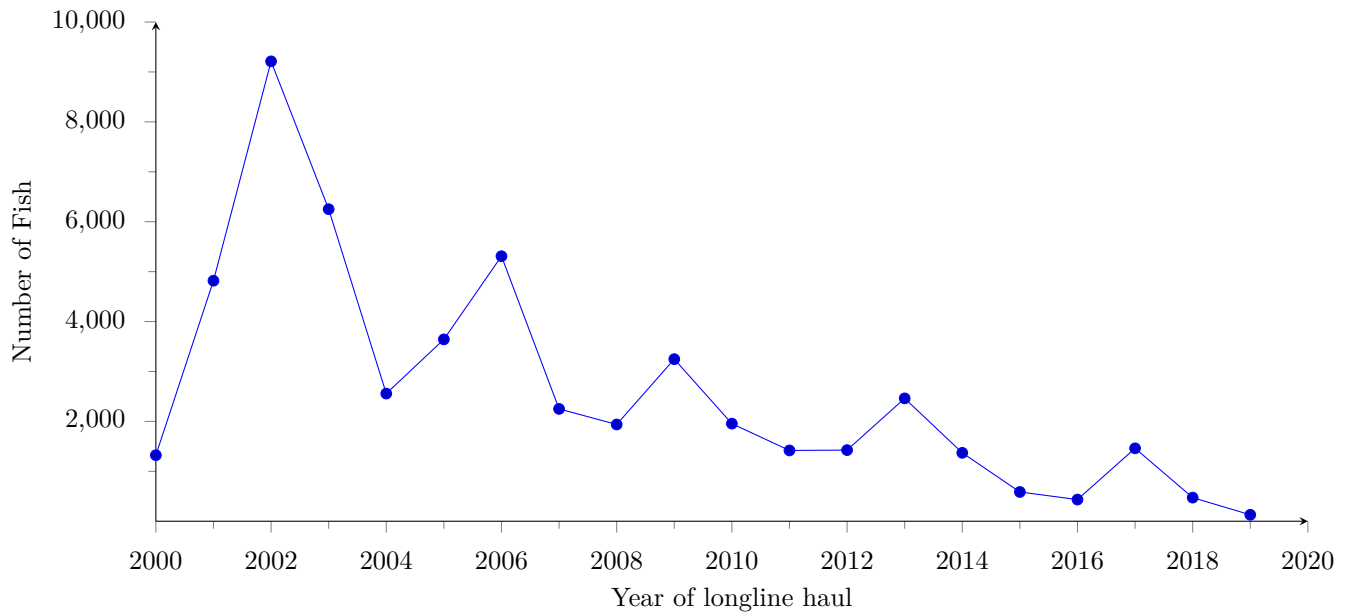


Figure 13: Annual catch (kept + released) of mahimahi by longline vessels based in American Samoa, in haul years 2000-2019.

Mahimahi Catch per Unit Effort

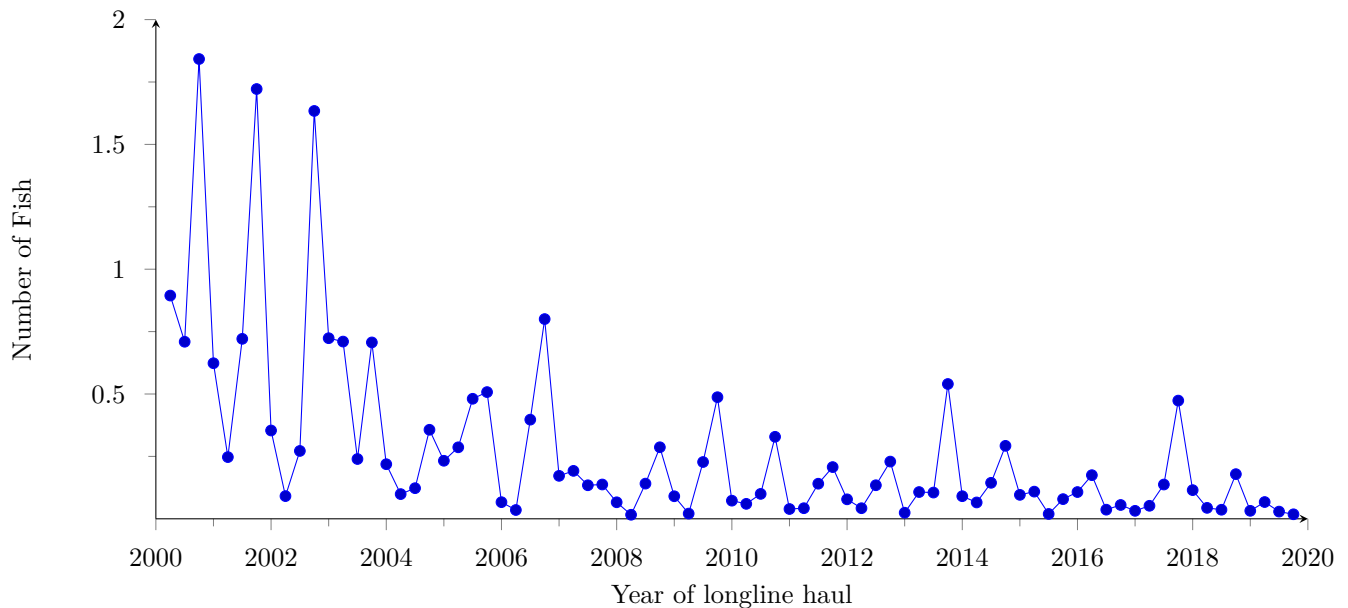


Figure 14: Quarterly catch per unit of effort (CPUE), of mahimahi (kept + released, per 1000 hooks), by longline vessels based in American Samoa, in haul years 2000-2019.

Billfish Catch

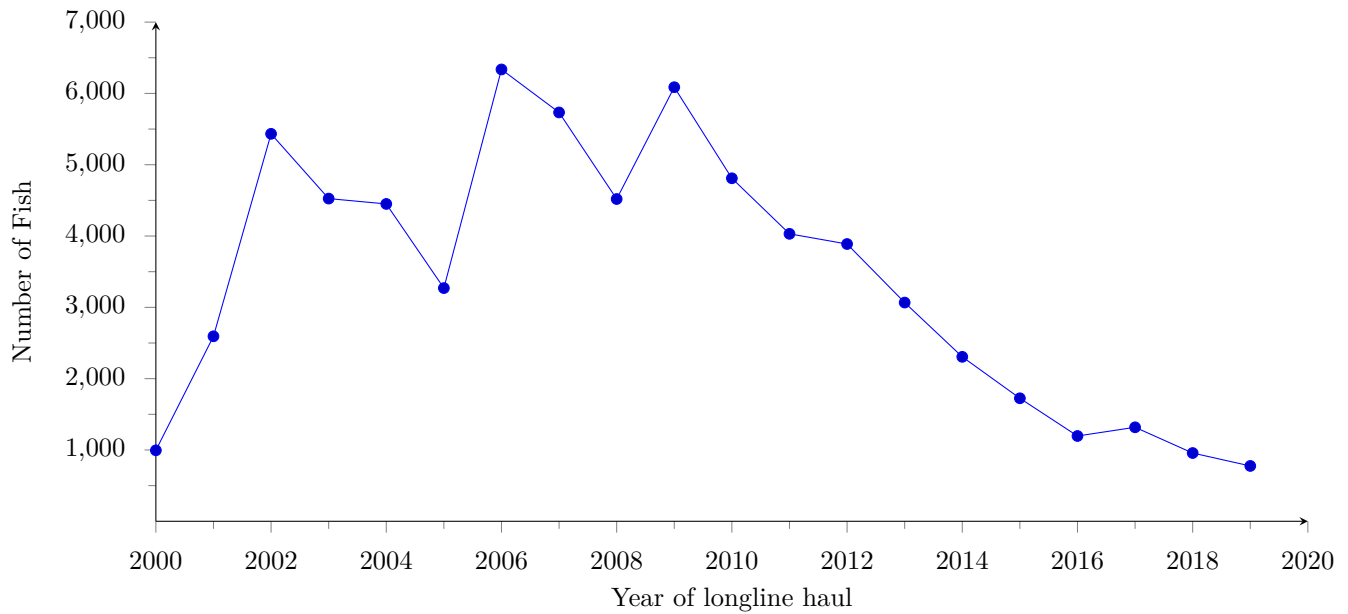


Figure 15: Annual catch (kept + released) of billfish by longline vessels based in American Samoa, in haul years 2000-2019.

Billfish Catch per Unit Effort

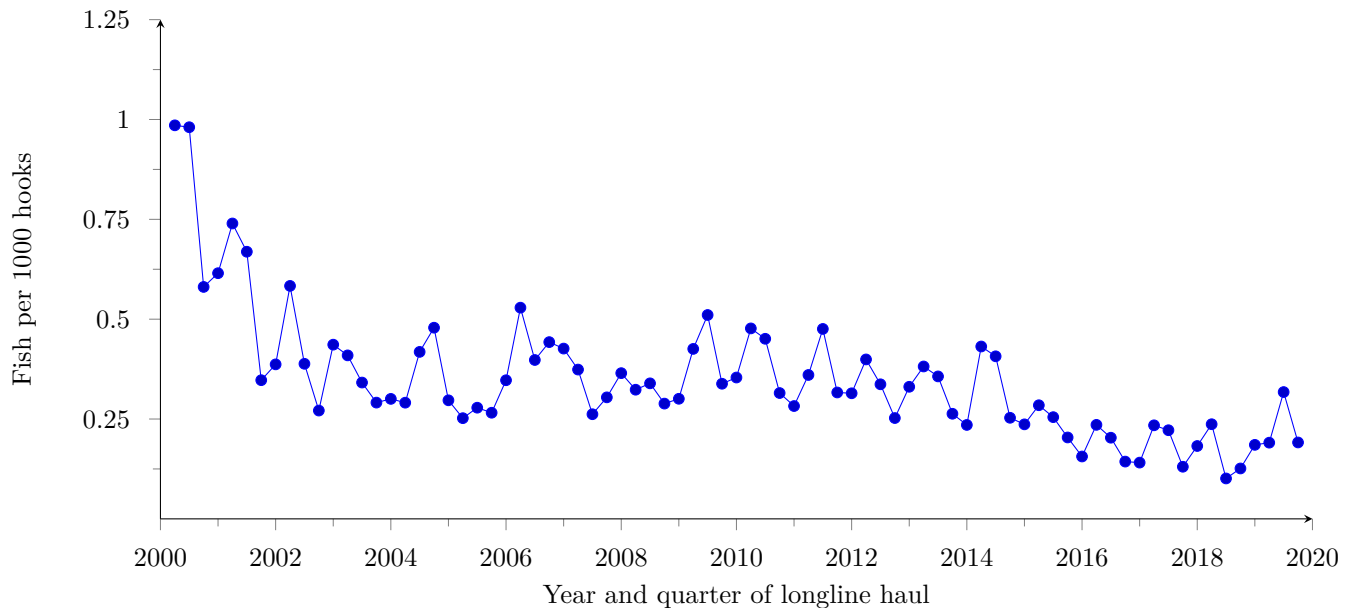


Figure 16: Quarterly catch per unit of effort (CPUE), of billfish (kept + released, per 1000 hooks), by longline vessels based in American Samoa, in haul years 2000-2019.

Shark Catch

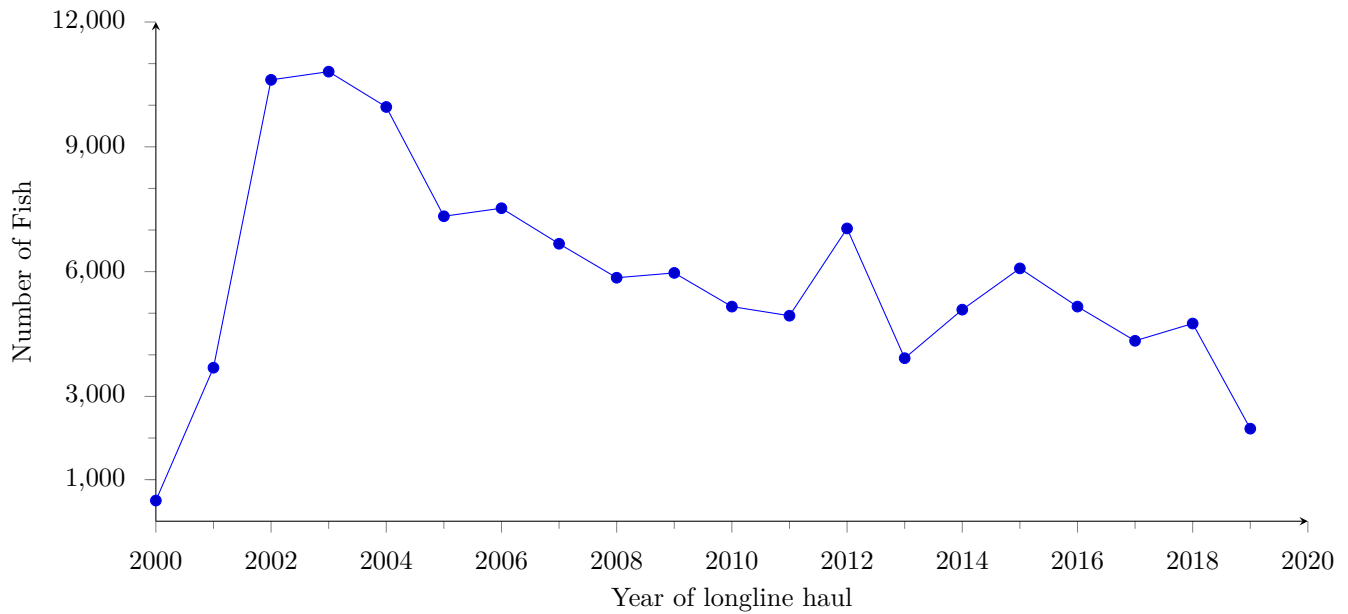


Figure 17: Annual catch (kept + released) of sharks by longline vessels based in American Samoa, in haul years 2000-2019.

Shark Catch per Unit Effort

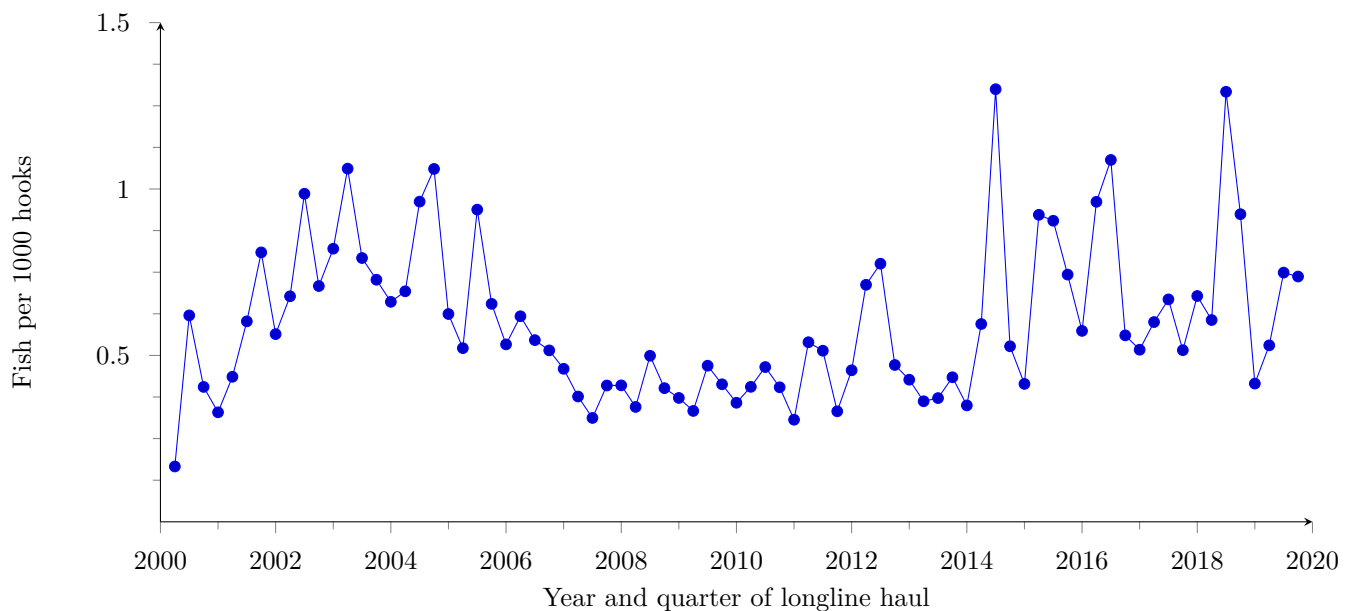


Figure 18: Quarterly catch per unit of effort (CPUE), of sharks (kept + released, per 1000 hooks), by longline vessels based in American Samoa, in haul years 2000-2019.

Wahoo Catch

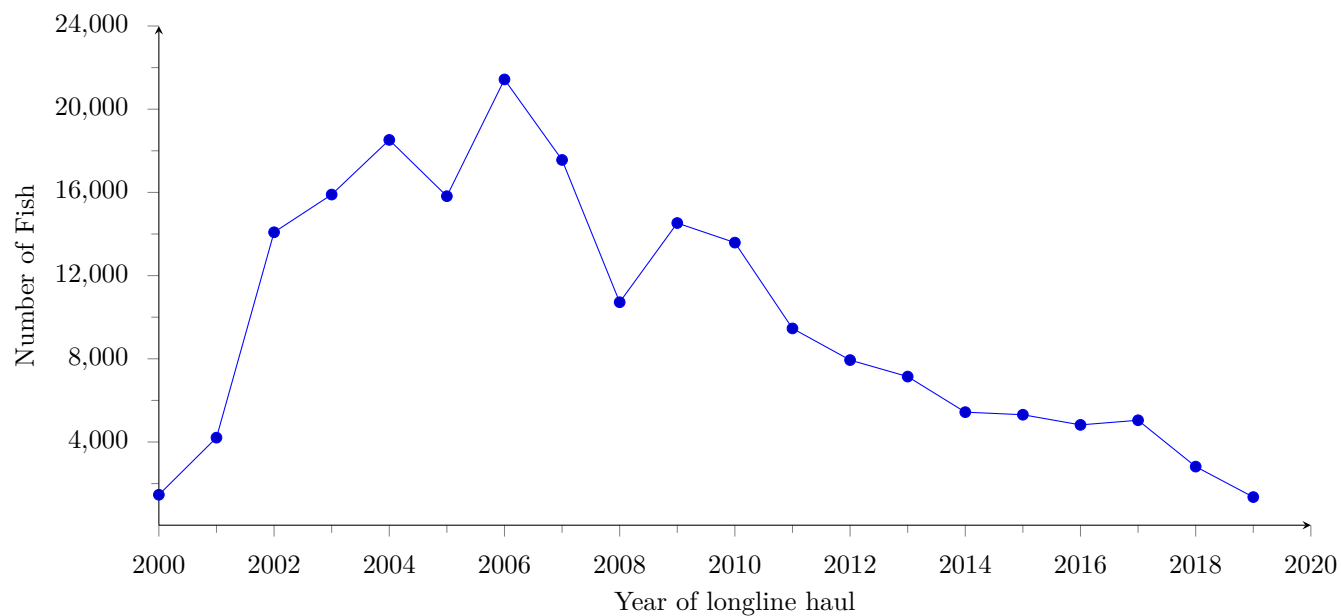


Figure 19: Annual catch (kept + released) of wahoo by longline vessels based in American Samoa, in haul years 2000-2019.

Wahoo Catch per Unit Effort

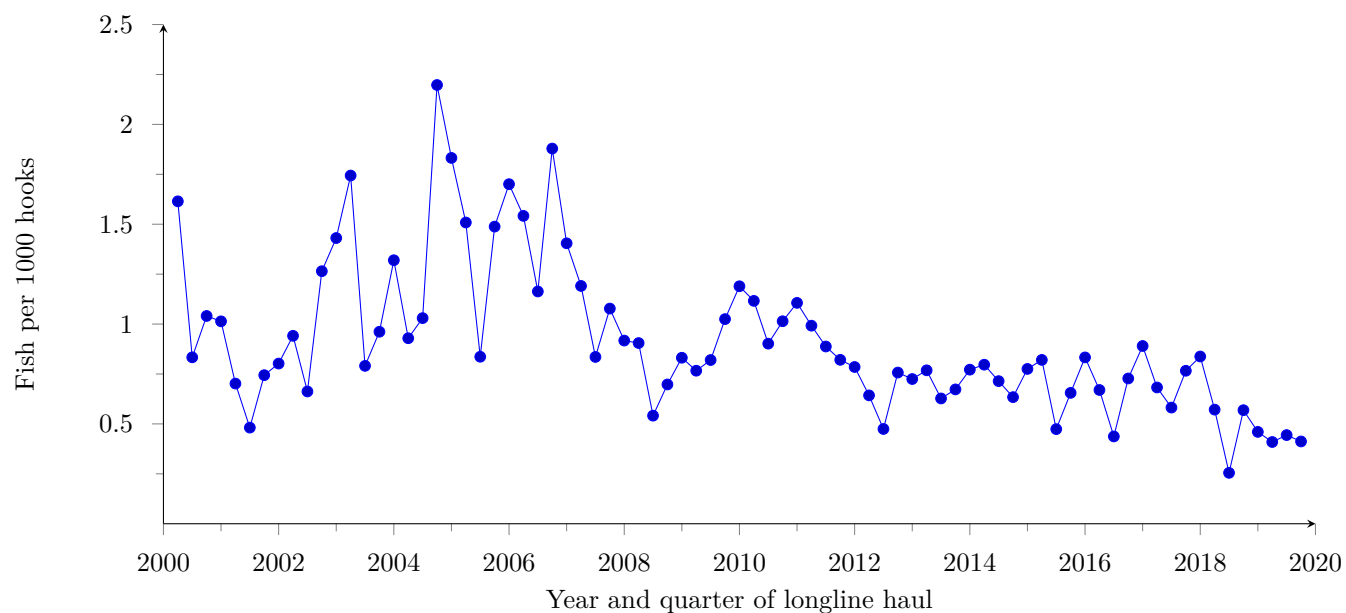


Figure 20: Quarterly catch per unit of effort (CPUE), of wahoo (kept + released, per 1000 hooks), by longline vessels based in American Samoa, in haul years 2000-2019.