

**The American Samoa Longline Limited-entry Fishery
Annual Report
1 January-31 December 2020¹**

Fisheries Research and Monitoring Division (FRMD)
Pacific Islands Fisheries Science Center (PIFSC), NOAA Fisheries
NOAA Inouye Regional Center
1845 Wasp Boulevard, Building 176, Honolulu, HI 96818

This annual report for the period 1 January-31 December 2020 contains summary data of fishing effort and catch statistics as reported from longline logbook data for the American Samoa longline limited-entry fishery. Data in this report originate from the PIFSC Information Management System (Oracle) table LLDS_REPORT_STATS_PRELIM_AS, representing preliminary data received as of 19 February 2021. Catch and effort statistics are based on date of longline haul. When a statistic (number of vessels, trips) involves dates of haul in two summary periods (i.e., years, semi-annual, quarters), the item is counted in both summary periods. Thus, a trip total is for “partial and completed” trips. As such, these statistics are not additive (i.e., sum of four quarters is not the total for the year).

The following tables show fishery statistics for the stated time period, area, and set type, and include effort (number of vessels, trips, sets, and hooks set). For each listed species, organized by pelagic management unit species (PMUS) groups of billfish, shark, tuna, and other, the table includes the number of fish caught, kept, and released, and the catch per unit effort (CPUE), measured as the number of fish caught per 1,000 hooks.

Additional figures graph catch numbers and effort for important species for the stated time period, area, and set type for years 2000-2020.

References:

Pacific Islands Fisheries Science Center, 2021: American Samoa Longline Logbook, <https://www.fisheries.noaa.gov/inport/item/1775>

¹PIFSC Data Report DR-xx-xxx. Issued dd mmm yyyy

Table 1. American Samoa longline limited-entry fishery annual statistics for all fishing areas and all fishing categories (set types), including effort (number of vessels, trips, sets, and hooks set). For each listed species, organized by pelagic management unit species (PMUS) groups of billfish, shark, tuna, and other, the table includes the number of fish caught, kept, and released, and the catch per unit effort (CPUE, number per 1,000 hooks, calculated as the sum of fish caught divided by the sum of hooks set). Data Source: PIFSC Information Management System, Longline Logbook Data.

Report Coverage

Time Period 1 January-31 December 2020
Set Types All Sets
Fishing Area All Areas

Number of vessels active	10
Number of trips (partial or completed)	78
Number of sets	809
Number of hooks set	2,210,541

Pelagic Management Unit Species (PMUS)	Number Caught	Number Kept	Number Released	CPUE Number Caught per 1000 Hooks
PMUS				
Billfish PMUS				
Blue marlin	298	283	15	0.13
Striped marlin	20	20	0	0.01
Shortbill spearfish	118	8	110	0.05
Swordfish	66	29	37	0.03
Other billfishes	39	11	28	0.02
Total	541	351	190	0.24
Shark PMUS				
Blue shark	513	0	513	0.23
Mako sharks	45	0	45	0.02
Thresher sharks	42	0	42	0.02
Oceanic whitetip shark	236	0	236	0.11
Silky shark	369	0	369	0.17
Total	1,205	0	1,205	0.55
Tuna PMUS				
Albacore	18,298	18,147	151	8.28
Bigeye tuna	687	685	2	0.31
Yellowfin tuna	8,037	7,927	110	3.64
Bluefin tuna	1	1	0	0.00
Skipjack tuna	5,947	5,854	93	2.69
Other tunas	0	0	0	0.00
Total	32,970	32,614	356	14.91
Other PMUS				
Mahimahi	342	336	6	0.15
Moonfish	23	19	4	0.01
Wahoo	773	755	18	0.35
Oilfish	637	3	634	0.29
Pomfret	188	12	176	0.09
Total	1,963	1,125	838	0.89
Total PMUS	36,679	34,090	2,589	16.59
Non-PMUS Sharks	2	0	2	0.00
Total Non-PMUS	357	2	355	0.16
Total All Species	37,036	34,092	2,944	16.75

Number of Vessels

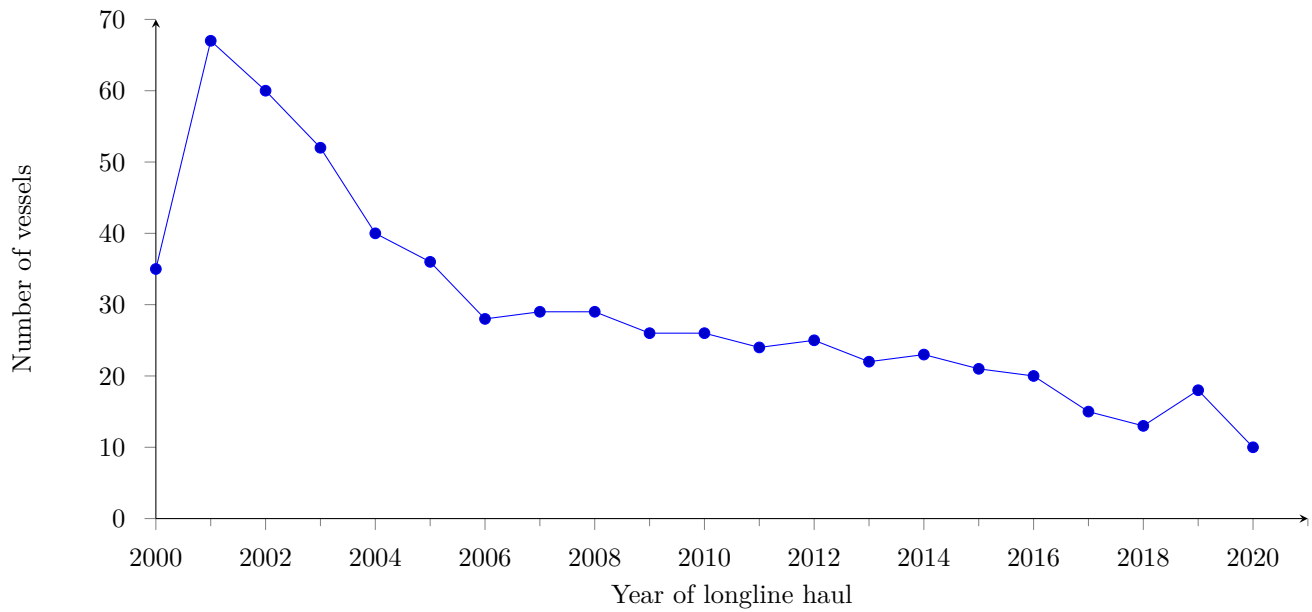


Figure 1: Annual number of active longline fishing vessels based in American Samoa in haul years 2000-2020.

Number of Trips

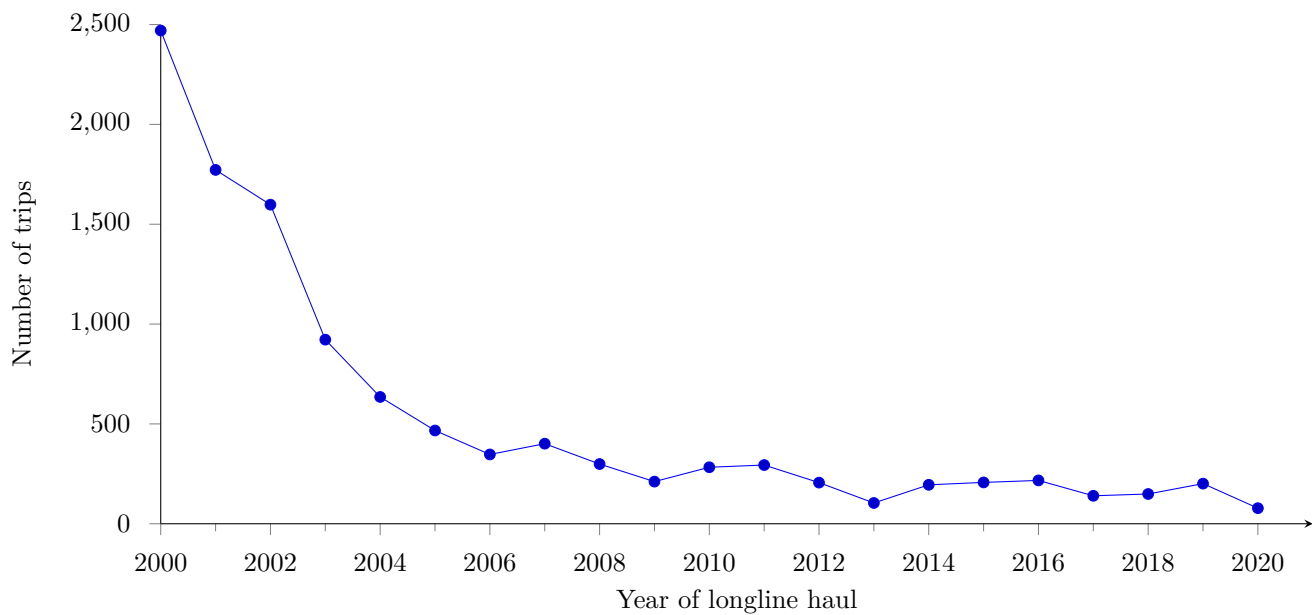


Figure 2: Annual number of trips by longline fishing vessels based in American Samoa in haul years 2000-2020.

Number of Sets

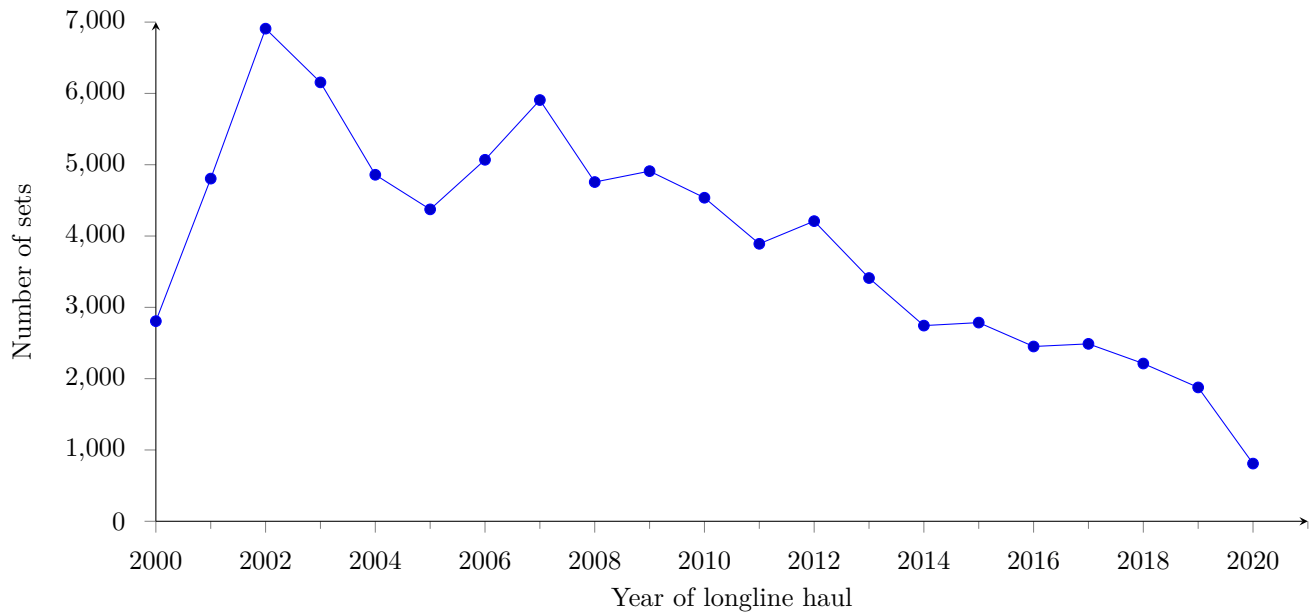


Figure 3: Annual number of sets by longline fishing vessels based in American Samoa in haul years 2000-2020.

Number of Hooks

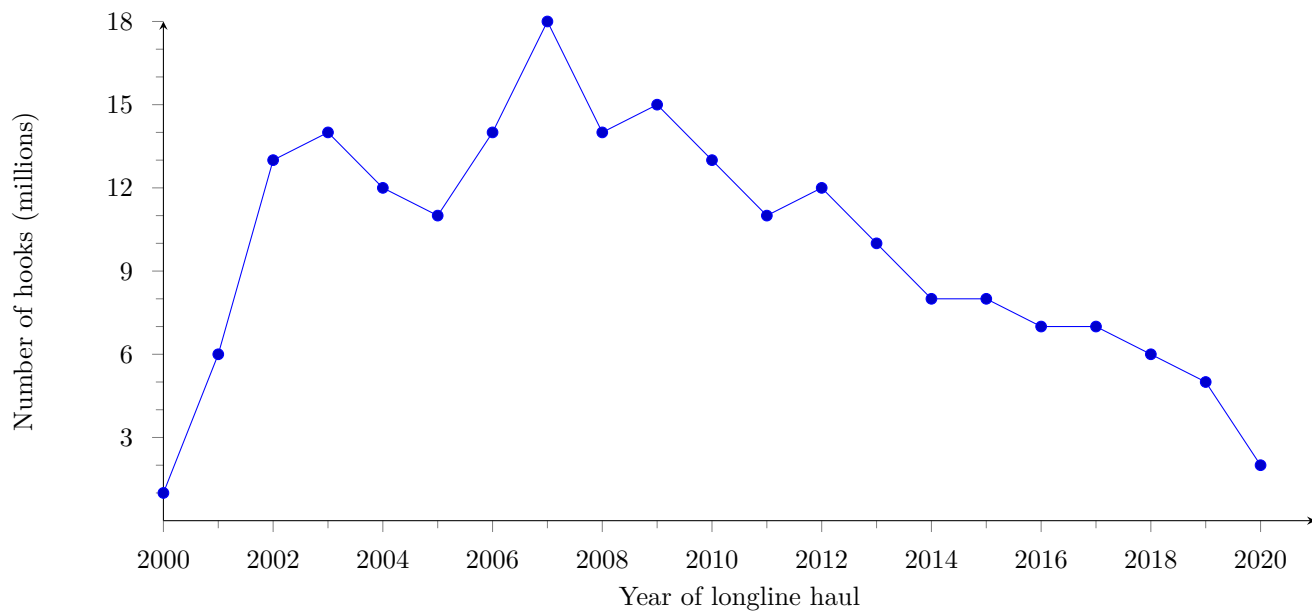


Figure 4: Number of hooks in millions, set by vessels based in American Samoa by year, 2000-2020.

Albacore Catch

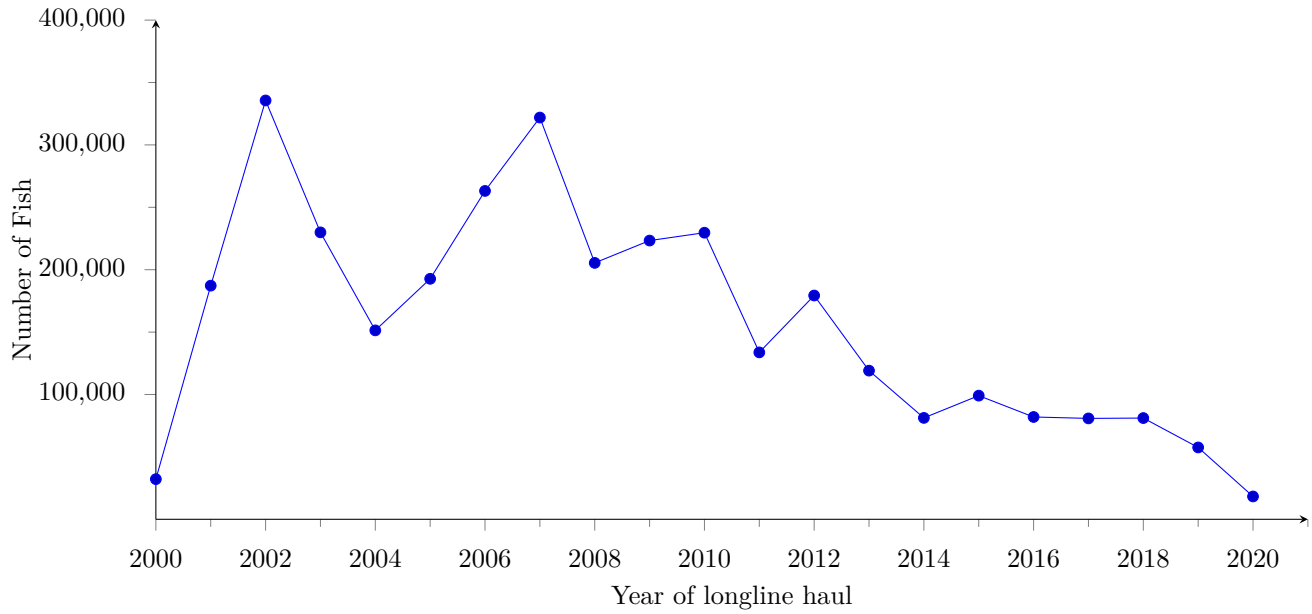


Figure 5: Annual catch (kept + released) of albacore tuna by longline vessels based in American Samoa in haul years 2000-2020.

Albacore Catch per Unit Effort

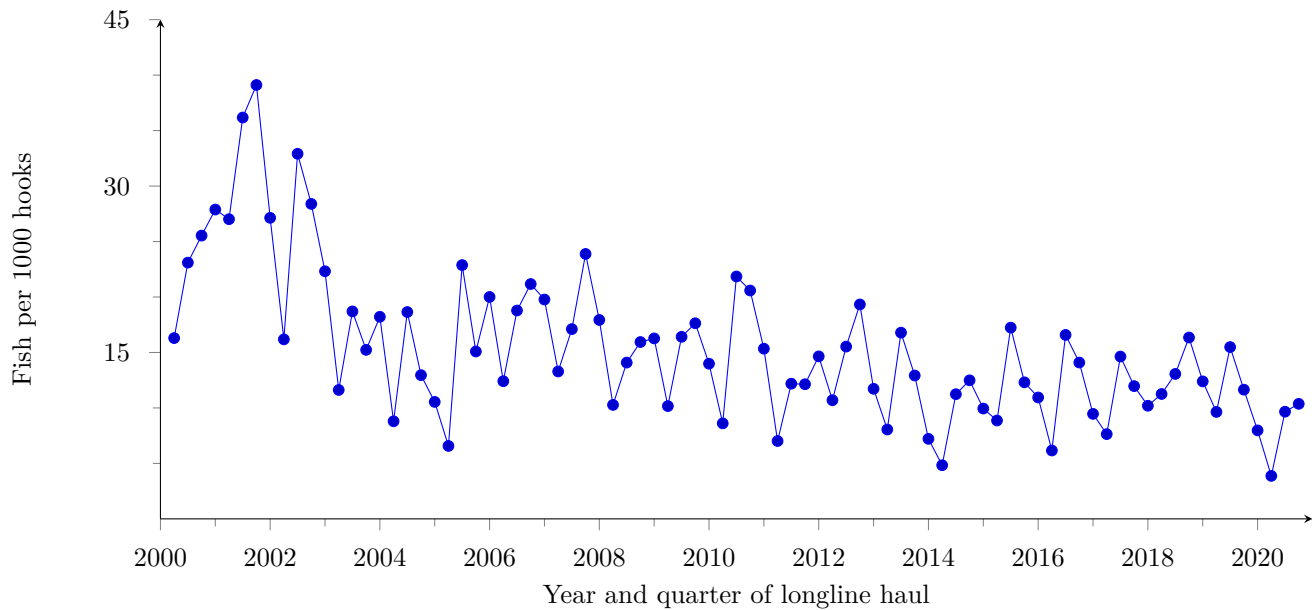


Figure 6: Quarterly catch per unit of effort (CPUE) of albacore tuna (kept + released, per 1000 hooks) by longline vessels based in American Samoa in haul years 2000-2020.

Bigeye Tuna Catch

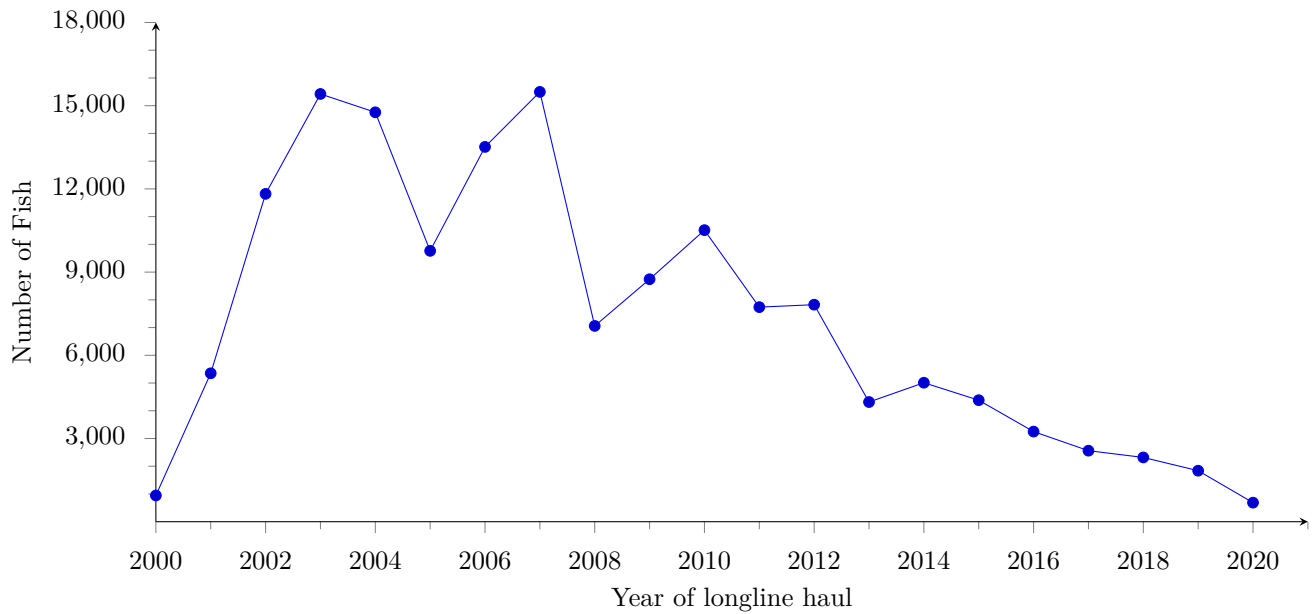


Figure 7: Annual catch (kept + released) of bigeye tuna by longline vessels based in American Samoa in haul years 2000-2020.

Bigeye Tuna Catch per Unit Effort

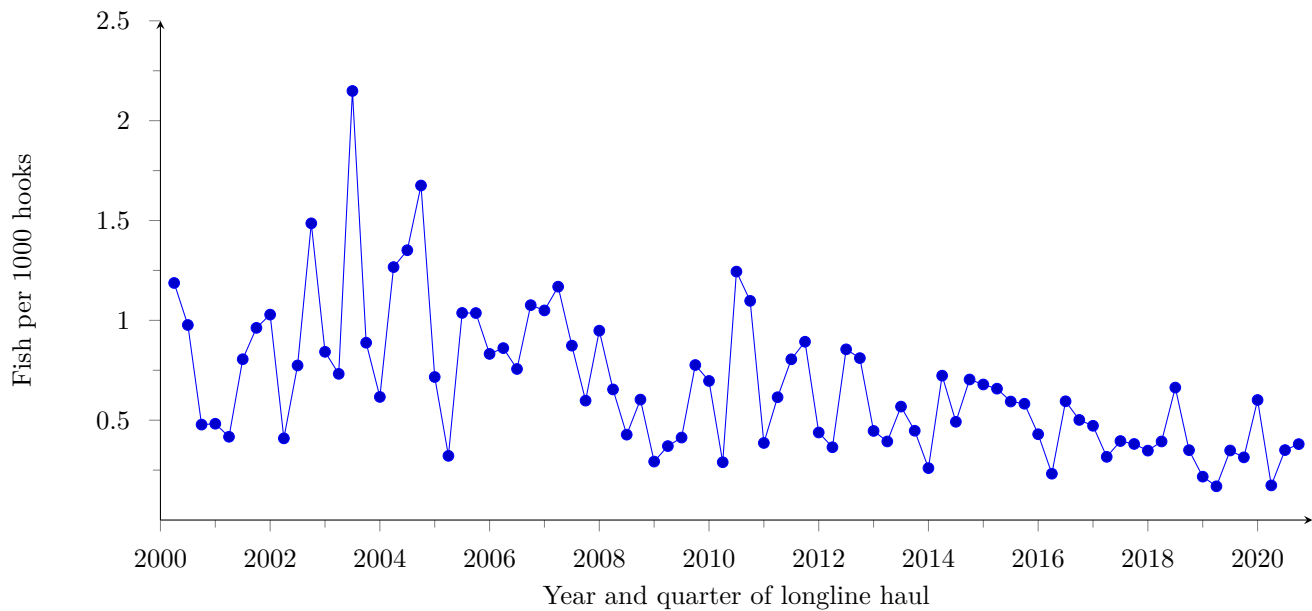


Figure 8: Quarterly catch per unit of effort (CPUE) of bigeye tuna (kept + released per 1000 hooks) by longline vessels based in American Samoa in haul years 2000-2020.

Yellowfin Tuna Catch

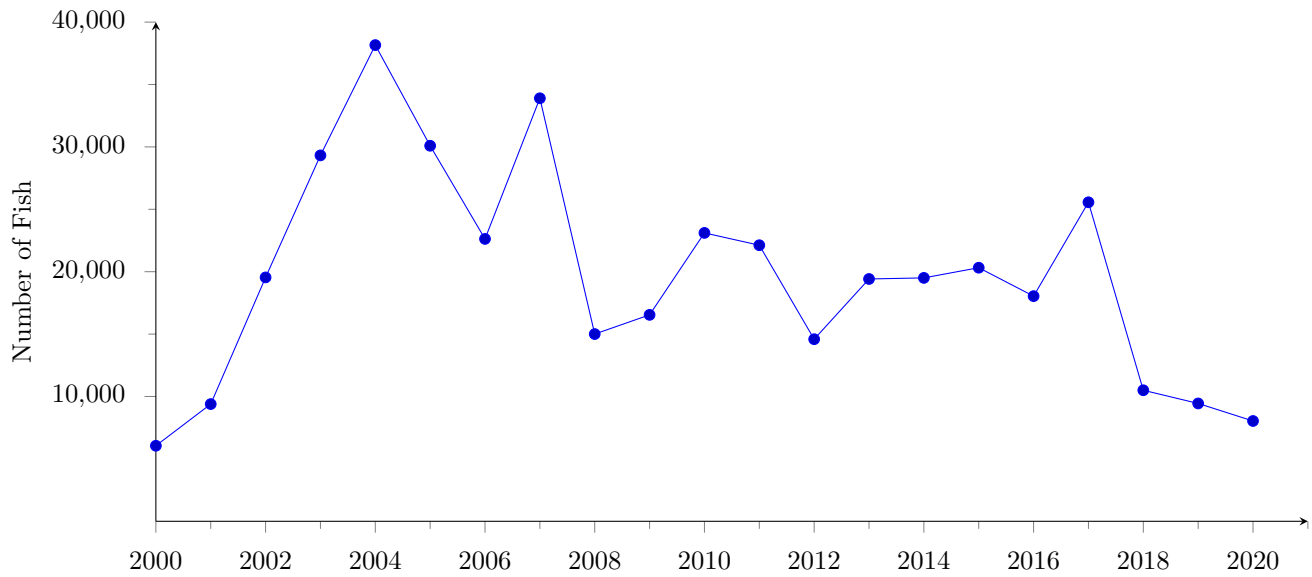


Figure 9: Annual catch (kept + released) of yellowfin tuna by longline vessels based in American Samoa in haul years 2000-2020.

Yellowfin Tuna Catch per Unit Effort

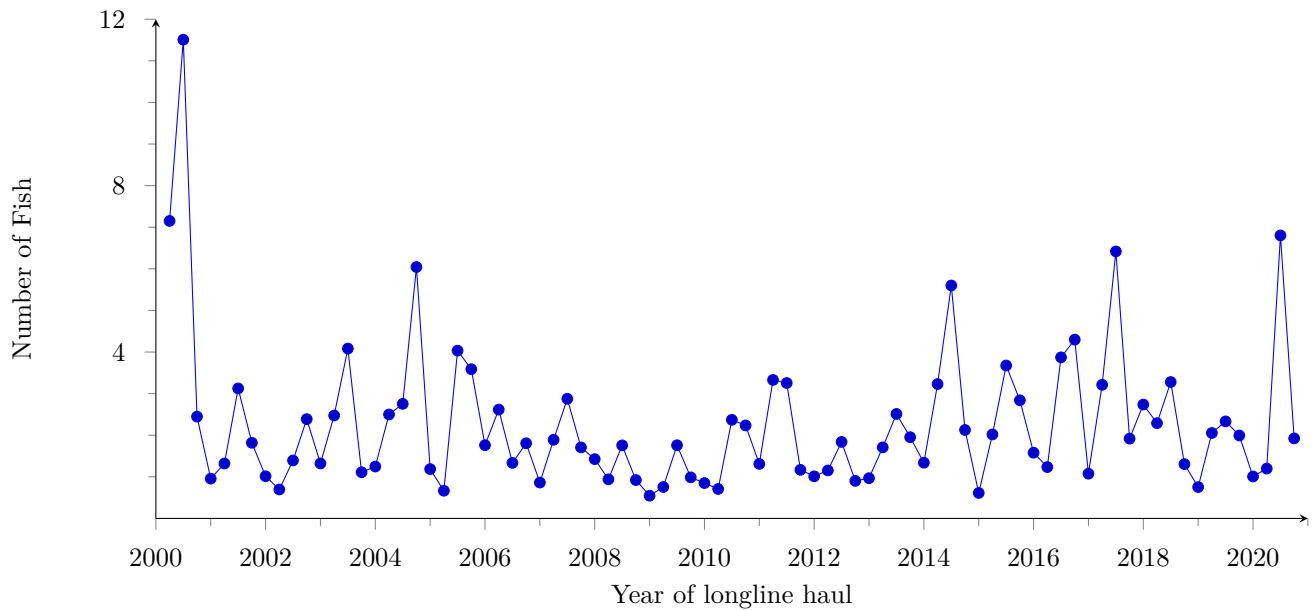


Figure 10: Quarterly catch per unit of effort (CPUE) of yellowfin tuna (kept + released, per 1000 hooks) by longline vessels based in American Samoa in haul years 2000-2020.

Skipjack Tuna Catch

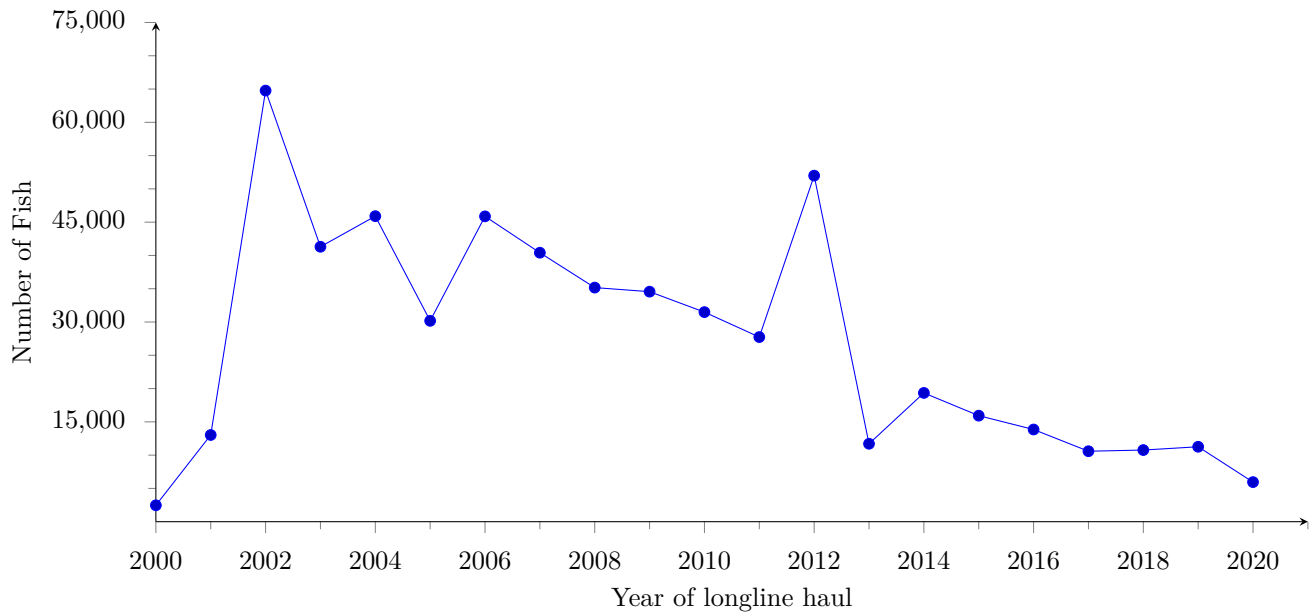


Figure 11: Annual catch (kept + released) of skipjack tuna by longline vessels based in American Samoa in haul years 2000-2020.

Skipjack Tuna Catch per Unit Effort

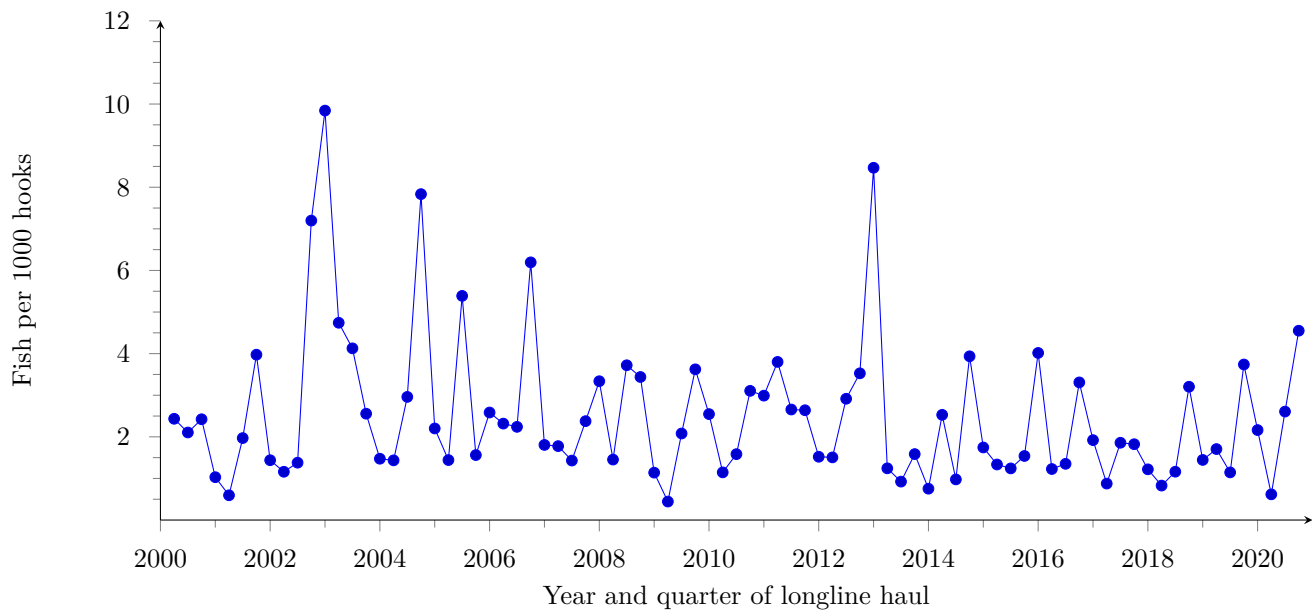


Figure 12: Quarterly catch per unit of effort (CPUE) of skipjack tuna (kept + released, per 1000 hooks) by longline vessels based in American Samoa in haul years 2000-2020.

Mahimahi Catch

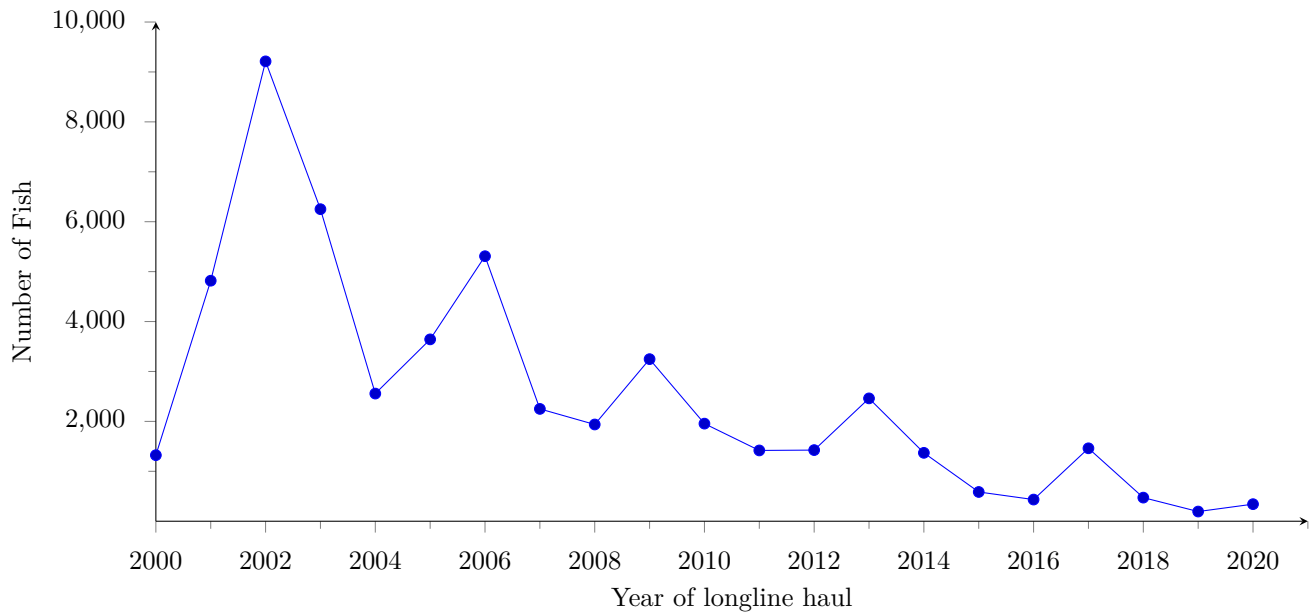


Figure 13: Annual catch (kept + released) of mahimahi by longline vessels based in American Samoa in haul years 2000-2020.

Mahimahi Catch per Unit Effort

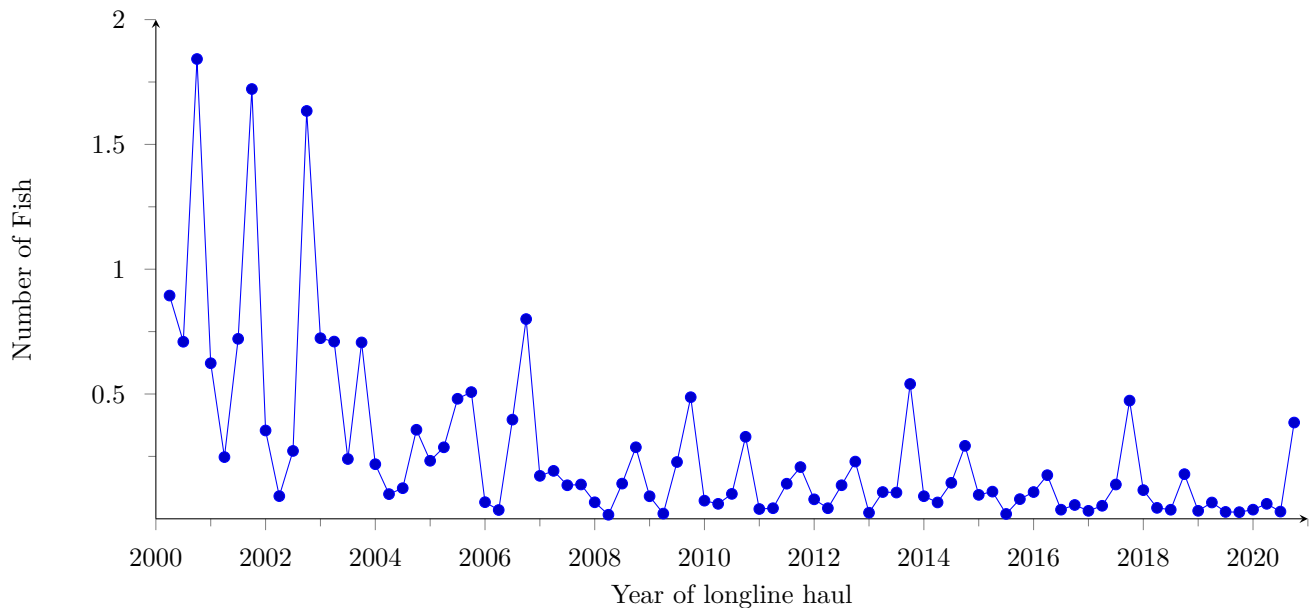


Figure 14: Quarterly catch per unit of effort (CPUE) of mahimahi (kept + released, per 1000 hooks) by longline vessels based in American Samoa in haul years 2000-2020.

Billfish Catch

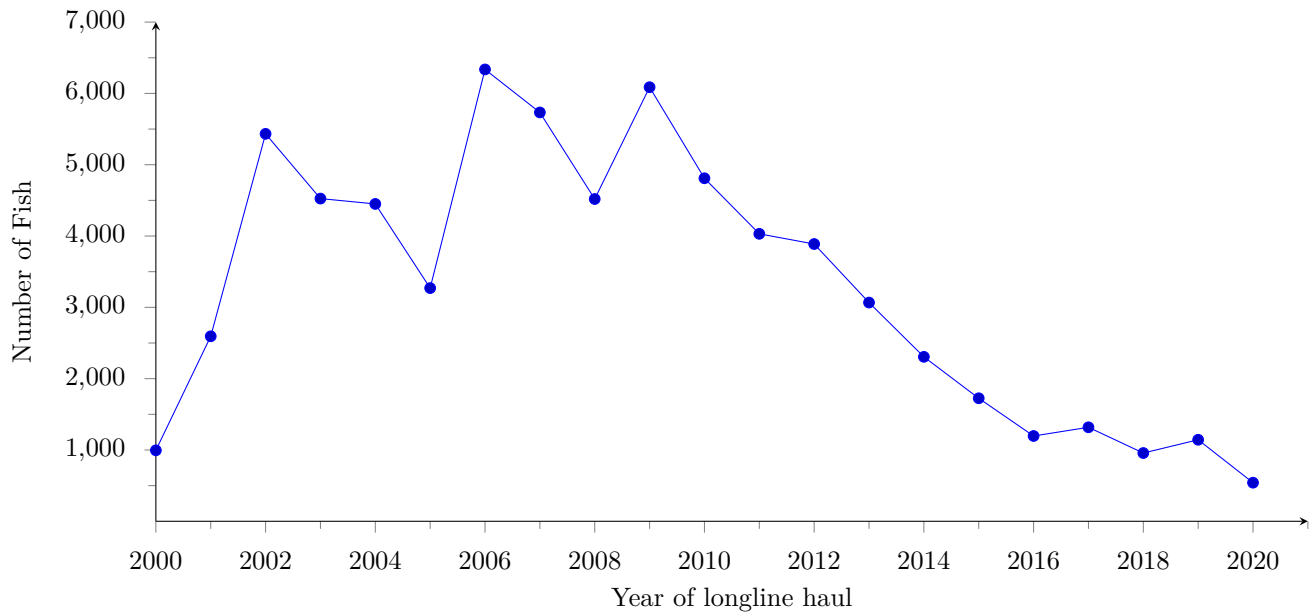


Figure 15: Annual catch (kept + released) of billfish by longline vessels based in American Samoa in haul years 2000-2020.

Billfish Catch per Unit Effort

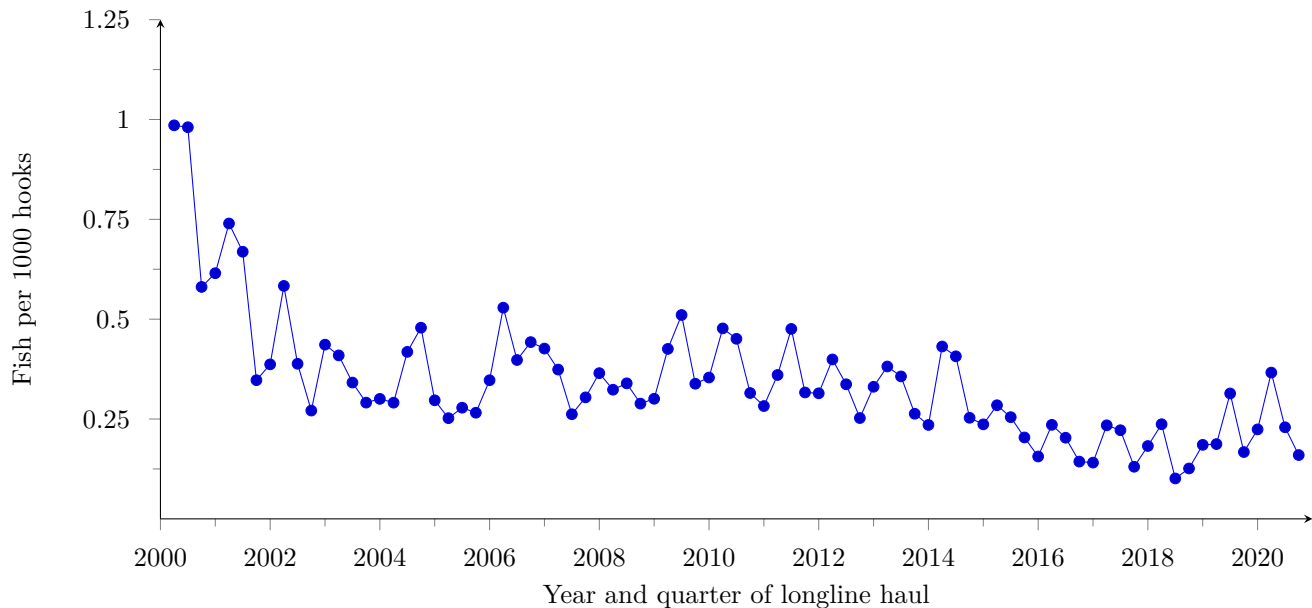


Figure 16: Quarterly catch per unit of effort (CPUE) of billfish (kept + released, per 1000 hooks) by longline vessels based in American Samoa in haul years 2000-2020.

Shark Catch

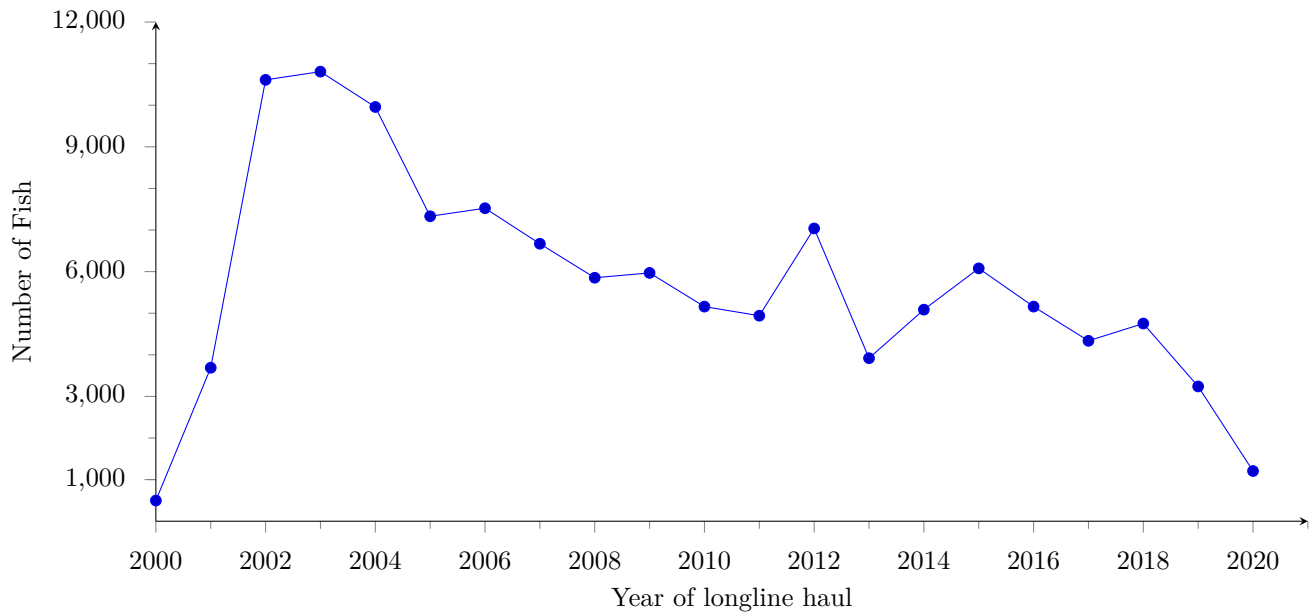


Figure 17: Annual catch (kept + released) of sharks by longline vessels based in American Samoa in haul years 2000-2020.

Shark Catch per Unit Effort

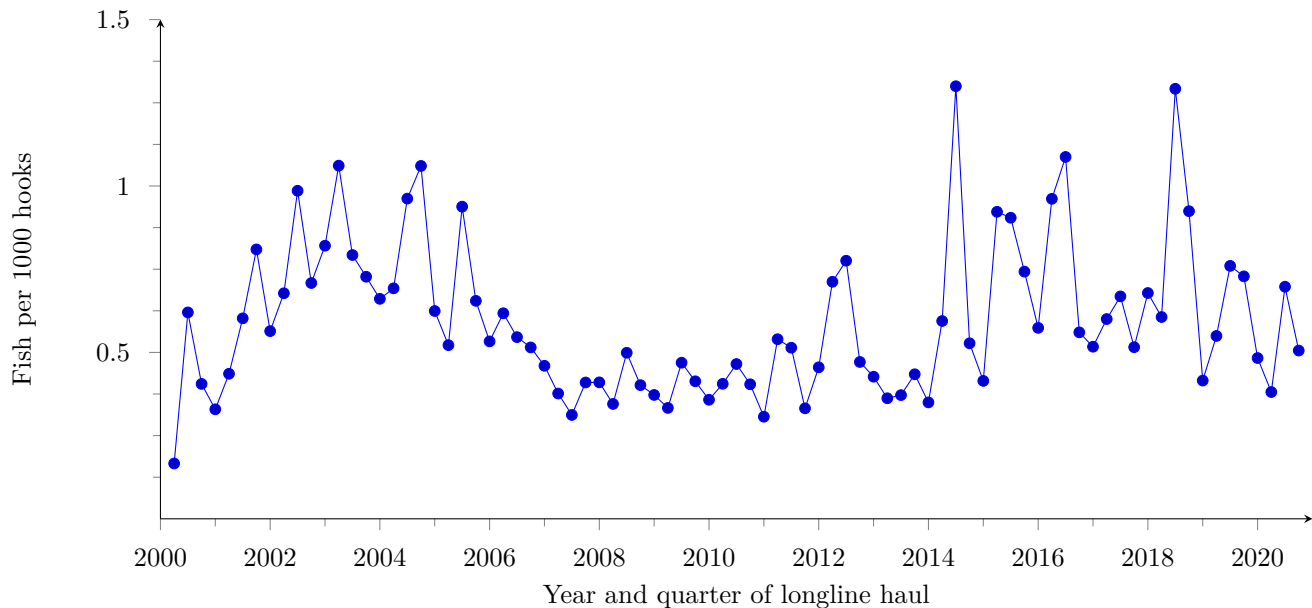


Figure 18: Quarterly catch per unit of effort (CPUE) of sharks (kept + released, per 1000 hooks) by longline vessels based in American Samoa in haul years 2000-2020.

Wahoo Catch

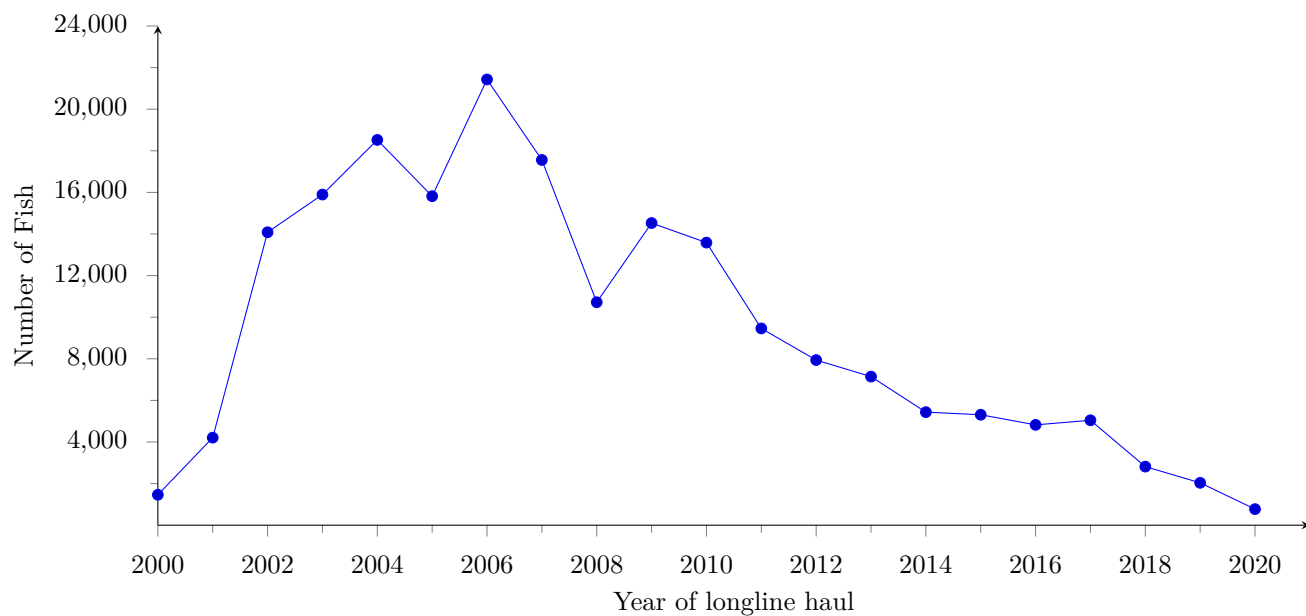


Figure 19: Annual catch (kept + released) of wahoo by longline vessels based in American Samoa in haul years 2000-2020.

Wahoo Catch per Unit Effort

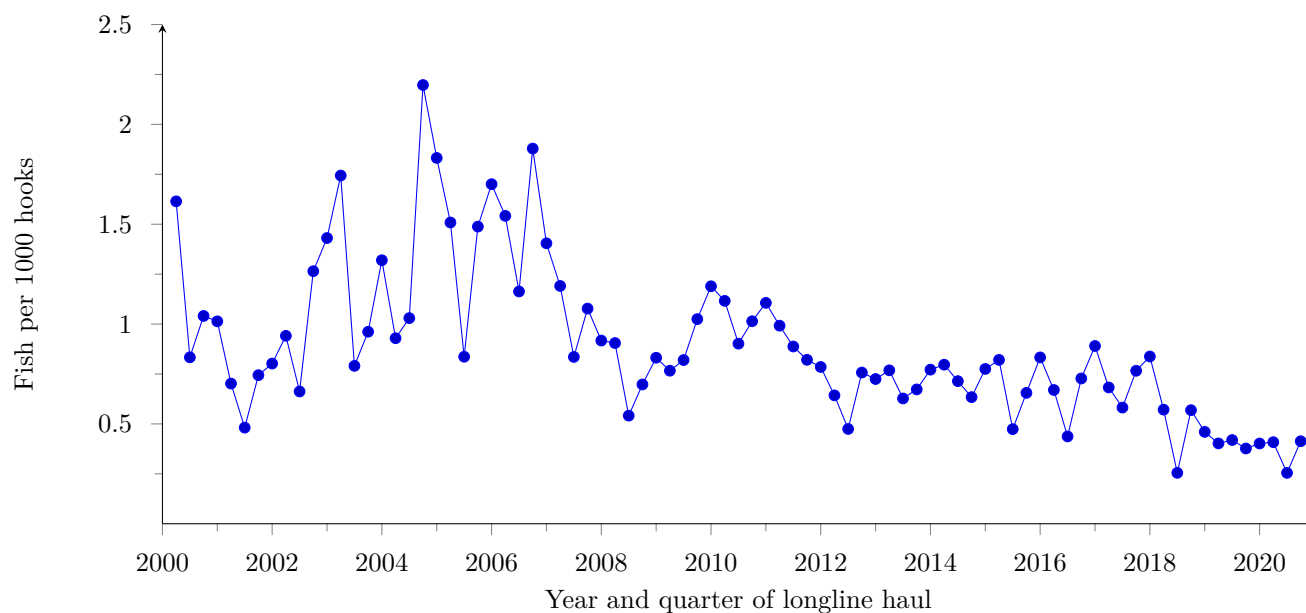


Figure 20: Quarterly catch per unit of effort (CPUE) of wahoo (kept + released, per 1000 hooks) by longline vessels based in American Samoa in haul years 2000-2020.